



# Trend Analysis Report

Lake Land College 2013

Office of Institutional Research  
M. Lynn Breer, PhD

 **Lake Land College**



# Table of Contents

<b>INTRODUCTION .....</b>	<b>1</b>
<b>SECTION A: DISTRICT DEMOGRAPHICS.....</b>	<b>3</b>
<i>Figure 1: Population Change.....</i>	<i>3</i>
<i>Figure 2: Median Income .....</i>	<i>4</i>
<i>Figure 3: Educational Attainment.....</i>	<i>5</i>
<i>Figure 4: Unemployment Rates.....</i>	<i>5</i>
<i>Figure 5: Employment by County.....</i>	<i>6</i>
<b>SECTION B: ENROLLMENT .....</b>	<b>8</b>
<i>Figure 6: Number of District High School Graduates and Enrollees after Graduation .....</i>	<i>8</i>
<i>Figure 7: Percent of District High School Graduates Enrolled in Following Fall and Year after Graduation .....</i>	<i>8</i>
<i>Figure 8: Lake Land College Enrollment within One Year of High School Graduation FY 2012: Shown by School District of Origin.....</i>	<i>9</i>
<i>Figure 9: Annual Headcount Compared to Annual Average Headcount of All Illinois Community Colleges.....</i>	<i>10</i>
<i>Figure 10: Annual Headcount .....</i>	<i>10</i>
<i>Figure 11: Annual Student FTE: 10<sup>th</sup> Day and End of Term Comparison .....</i>	<i>11</i>
<i>Figure 12: Total Annual Credit Hours.....</i>	<i>11</i>
<i>Figure 13: Annual End of Term Headcount without DOC.....</i>	<i>12</i>
<i>Figure 14: Annual End of Term Total Credit Hour without DOC.....</i>	<i>12</i>
<i>Figure 15: Annual End of Term Headcount with DOC .....</i>	<i>13</i>
<i>Figure 16: Annual End of Term Total Credit Hours with DOC.....</i>	<i>13</i>
<i>Figure 17: Fiscal Year 2012 Enrollment: Head Count of all Illinois students by Semester and Zip Codes.....</i>	<i>14</i>
<i>Figure 18: Fiscal Year 2012 Enrollment: Illinois Department of Corrections Facility Head Count .....</i>	<i>15</i>
<i>Figure 19: Annual Headcount by Student Category .....</i>	<i>16</i>
<i>Figure 20: Annual Credit Hours by Student Category.....</i>	<i><b>Error! Bookmark not defined.</b></i>
<i>Figure 21: Annual Headcount by Degree Type.....</i>	<i>17</i>
<i>Figure 22: Annual Credit Hours by Degree Type .....</i>	<i>17</i>
<i>Figure 23: Annual Headcount by Type of Course .....</i>	<i>18</i>
<i>Figure 24: Annual Total Credit Hours by Type of Course.....</i>	<i>18</i>
<i>Figure 25: Annual Headcount for the Kluthe Center .....</i>	<i>19</i>
<i>Figure 26: Annual Credit Hours for the Kluthe Center.....</i>	<i>19</i>
<i>Figure 27: Annual Headcount for Extension Centers.....</i>	<i>19</i>
<i>Figure 28: Annual Credit Hours for Extension Centers .....</i>	<i>19</i>
<i>Figure 29: Fall Enrollment by Student Program of Study (Major) .....</i>	<i>20</i>
<b>SECTION C: STUDENT DEMOGRAPHICS AND INFORMATION .....</b>	<b>21</b>
<i>Figure 30: Annual Percentage of Students by Gender and Student Load .....</i>	<i>21</i>
<i>Figure 31: Average Age of Students.....</i>	<i>21</i>
<i>Figure 32: Percent of Minority Students Compared to Percent of Minority Residents in the District .....</i>	<i>22</i>
<i>Figure 33: Percent of Students Enrolled in Eligible Programs and Receiving Any Type of Financial Aid.....</i>	<i>23</i>
<i>Figure 34: Annual Number of Students Receiving Financial Aid by Type .....</i>	<i>23</i>
<i>Figure 35: Average Total Amount of Financial Aid Received per Student.....</i>	<i>24</i>
<i>Figure 36: Comparison of Average ACT Composite Scores .....</i>	<i>24</i>
<i>Figure 37: Three Year Retention and Graduation Rates of First Time Full Time Degree Seeking Students.....</i>	<i>25</i>
<i>Figure 38: Retention for First Time Full Time Degree Seeking Student Cohorts.....</i>	<i>25</i>
<i>Figure 39: Average GPA of Lake Land College Transfer Students Compared to All Other Community College Transfer and Native Students.....</i>	<i>26</i>

*Figure 40: LLC Compared to National Average: 2007-2009, 2012 Would Enroll Again, 2010 Would Recommend College .....27*

*Figure 41: LLC Compared to National Average: Satisfied with College Experience.....27*

*Figure 42: LLC Compared to National Average: 2007-2009, 2012 College Experience Better than Expected, 2010 Academic Quality of College .....27*

*Figure 43: Percentage of First Time Degree Seeking Students Testing into Developmental Courses .....28*

*Figure 44: Students Successfully Complete First College Level Course after Final Developmental Course .....29*

**SECTION D: TUITION, FEES, AND OTHER FINANCIAL DATA ..... 30**

*Figure 45: Tuition and Fees .....30*

*Figure 46: Comparison of Tuition with all Illinois Community Colleges .....31*

*Figure 47: Annual Tuition and Fees for Full Time Students by College.....32*

*Figure 48: Percentage of General Fund by Source .....33*

*Figure 49: Dollar Amount of General Fund by Source.....34*

*Figure 50: History of EAV Rates by Tax Levy Year .....35*

*Figure 51: Additions to the Reserve Fund .....35*



## Introduction

The Trend Analysis Report provides an overview of multiyear data encompassing Lake Land College and the district it serves. The data provided in this report provide facts to inform and support decision making for the College.

All annual data in this report (i.e., fiscal year or annual) consists of data from summer, fall, and spring terms in that order. For example, 2006 annual data and/or 2006 fiscal year data includes data from summer 2005, fall 2005, and spring 2006. Since the Illinois Community College Board (ICCB) uses summer, fall, and spring terms in that order to represent their fiscal year, using the same definition of annual or fiscal year data allows the College to compare these numbers to the same numbers for all community colleges in Illinois that are produced by ICCB.

The report provides data related to areas integral to the future and success of Lake Land College. These areas are presented in the following four sections:

1. Section A: District Demographics,
2. Section B: Enrollment,
3. Section C: Student Demographics and Information, and
4. Section D: Tuition, Fees and Other Financial Data.

Section A: District Demographics provides a summary of Lake Land College's district demographics. Lake Land's district encompasses parts or all of the following counties: Effingham, Cumberland, Coles, Clark, Moultrie, Shelby, Fayette, Edgar, Clay, Christian, Montgomery, and Macon. Changes over time regarding the district's population, median income, education attainment, unemployment, and employment by industry are presented via geospatial maps encompassing the counties listed above with an outline of the actual district Lake Land College serves. For median income and education attainment, state and national averages are provided on the maps for comparisons.

Section B: Enrollment summarizes annual headcount, FTE and credit hours for Lake Land College students. Unless noted in the graphs, all headcount, FTE, and credit hours presented in this section exclude DOC students. Career students are defined as students seeking an AAS, ALS, or CRT degree. Transfer students are defined as students seeking an AA, AES, or AS degree. Annual headcount, FTE, and credit hours are based on end of term numbers unless otherwise stated. In addition, headcount numbers reflect unduplicated students with one exception. The Annual Headcount by Type of Course graph reflects duplicated students, since students can take an online, evening, and/or a weekend course. The final graphs in this section summarize enrollment in the top ten programs experiencing increasing or decreasing enrollment numbers.

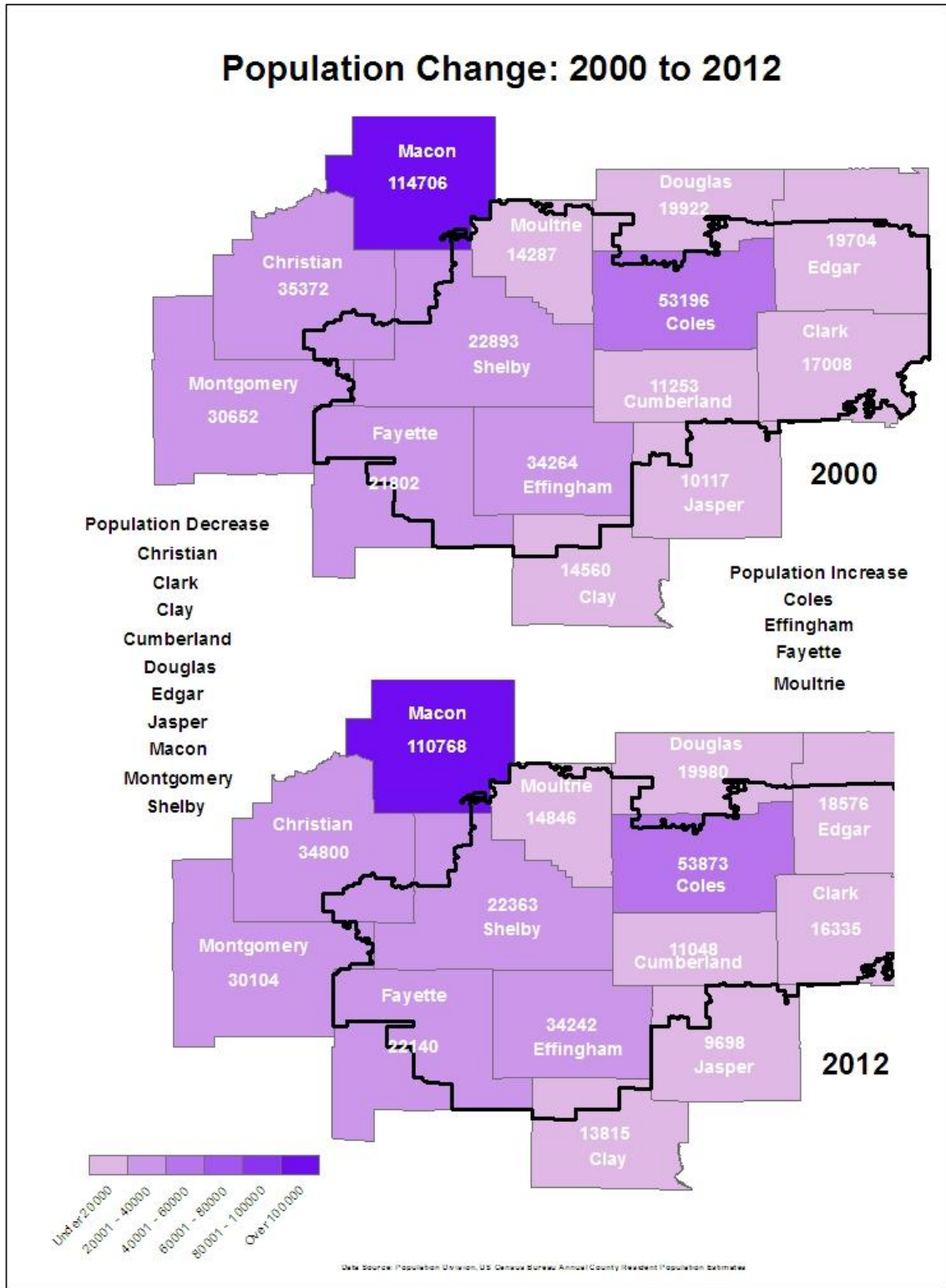
Section C: Student Demographics and Information presents data related to gender, age, race/ethnicity, financial aid, average ACT Scores, success rates, graduation rates, retention, GPA of Lake Land transfer students in their transfer university or college, student satisfaction, and assessment related to developmental courses. The headcount and percentages of students in most of the graphs reflect unduplicated students. However, the Number of Students Receiving Financial Aid and the Percentage of Students Testing into Developmental Courses reflect duplicated students, since students can receive more than one type of financial aid and assess into more than one developmental course area (e.g., math, English, and/or reading). The percentage of students receiving financial aid may be under

reported because the numbers presented in this report reflect only the financial aid which the college administers. These numbers exclude students receiving scholarships directly from the funding organization because the College is unaware of these scholarships. All three satisfaction measures presented in this report are pulled from the Noel Levitz Satisfaction Survey that Lake Land College administers to its students.

Section D: Tuition, Fees, and Other Financial Data summarizes the history of Lake Land College's tuition and fees, as well as, funding by source, net instructional costs, and EAV rates. In addition, several of the graphs provide a comparison of Lake Land College's tuition and fees with all other community colleges in Illinois.

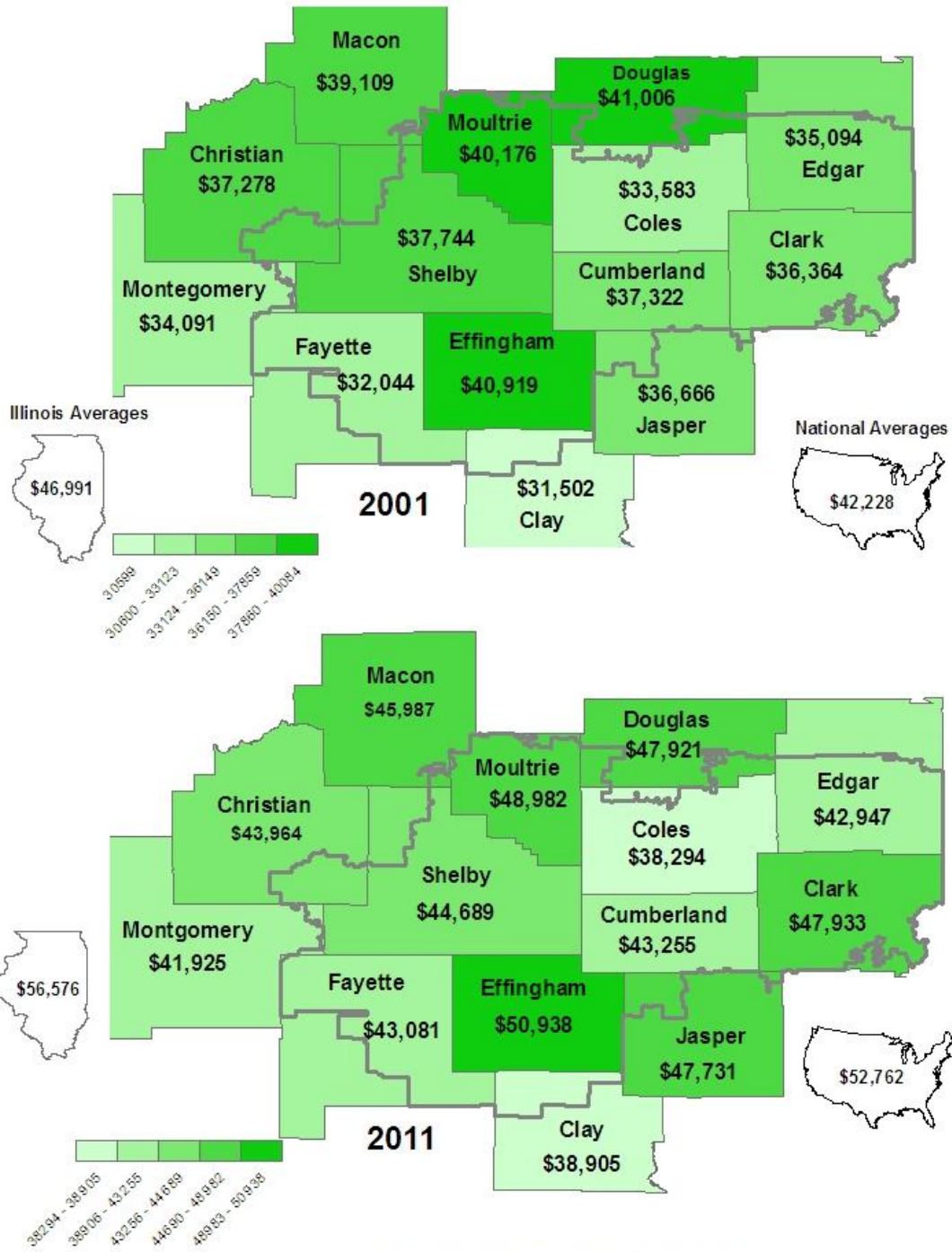
While reviewing the figures in the document, please keep several things in mind. First, students can enroll through fall and spring terms. As a result, annual and end of term data may look quite different from ten day data, which is the data that the Illinois Community College Board (ICCB) presents in most of their reports. Second, several figures do not present fiscal year 2012 data. In these cases, final 2012 data is not available at this time.

## Section A: District Demographics

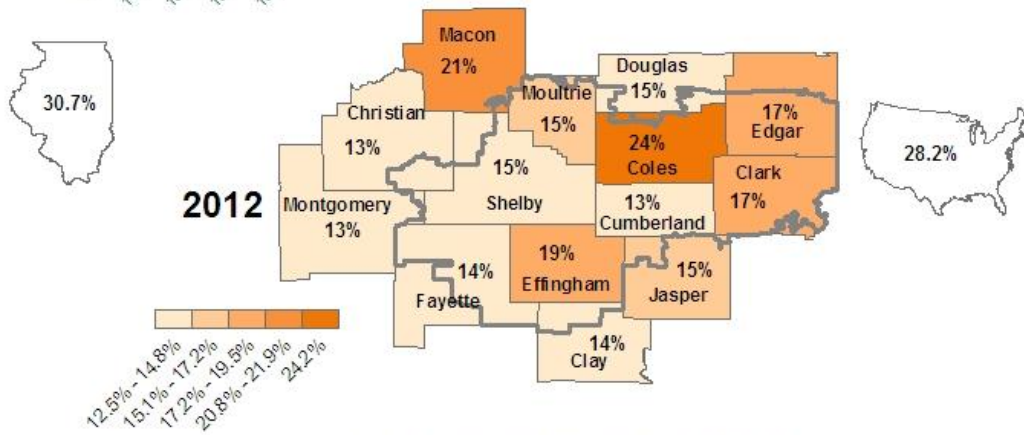
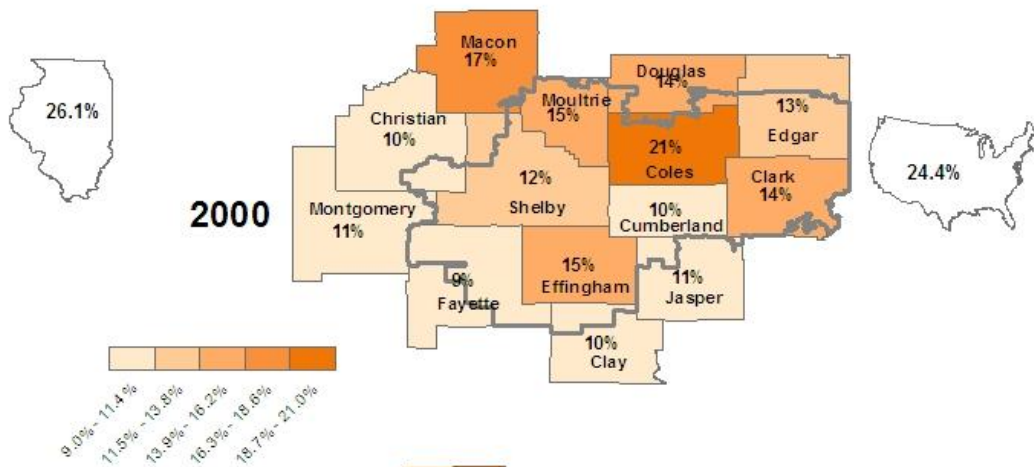
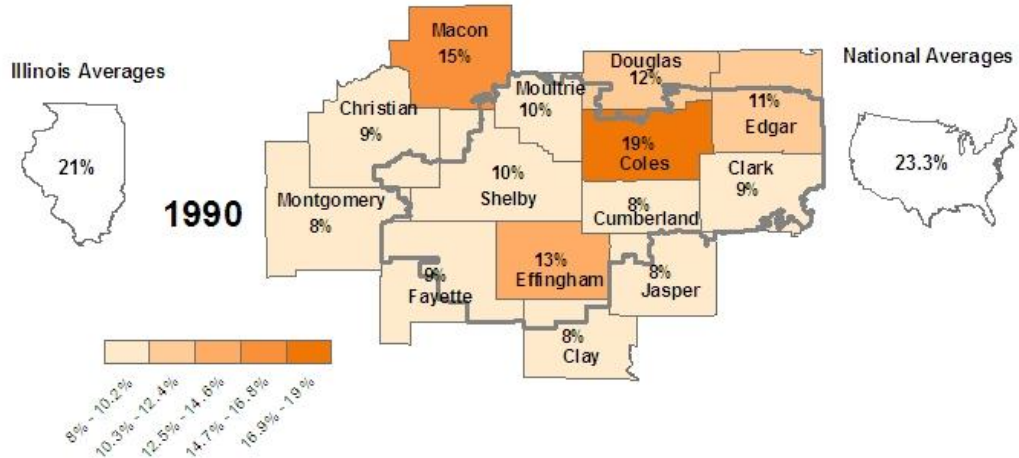




## Median Household Income: 2001 and 2011

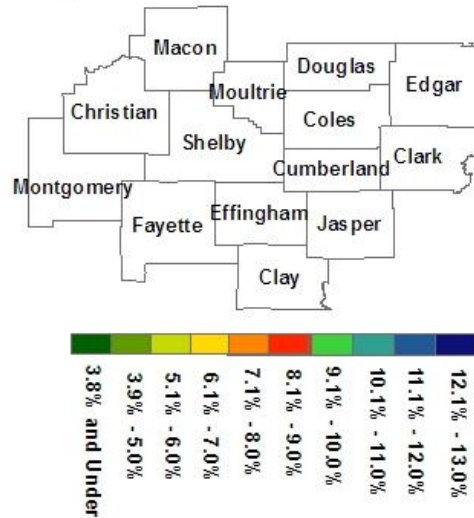
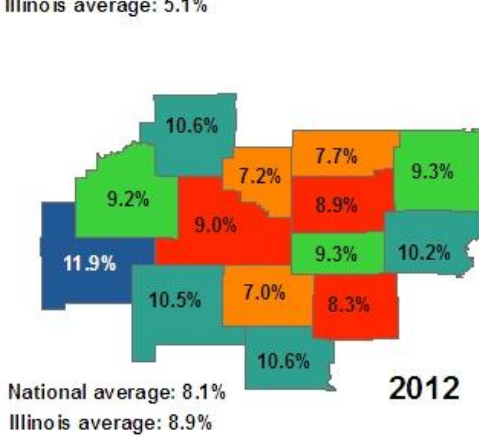
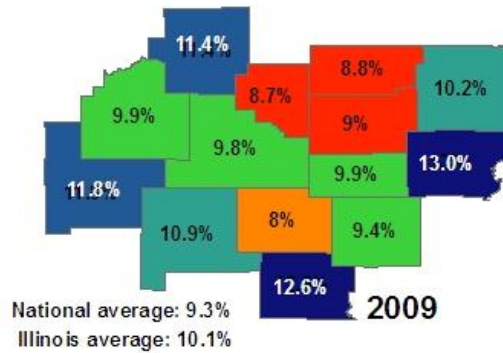
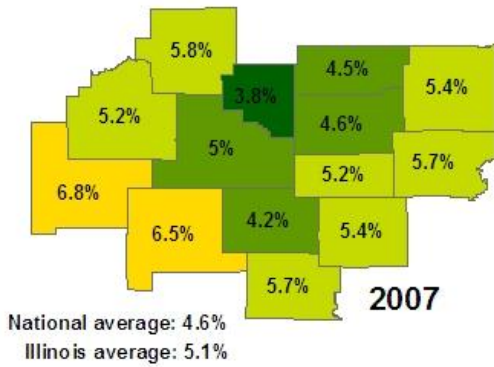
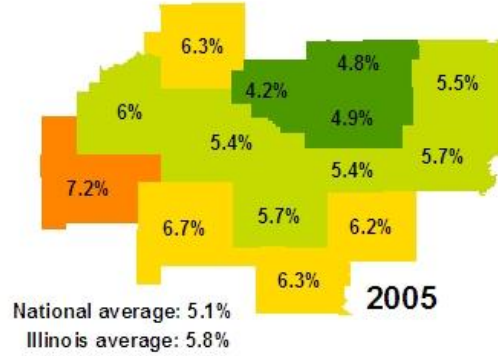
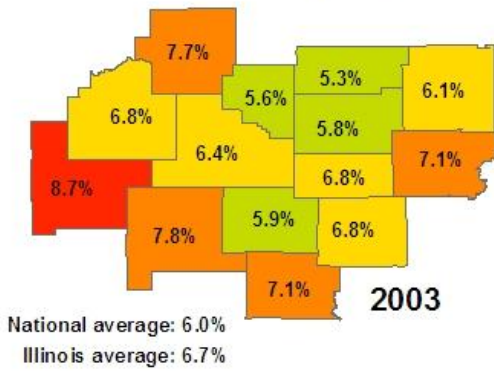


## Educational Attainment of Lake Land College District: Percent of Population 25 and Older with Bachelor's Degree



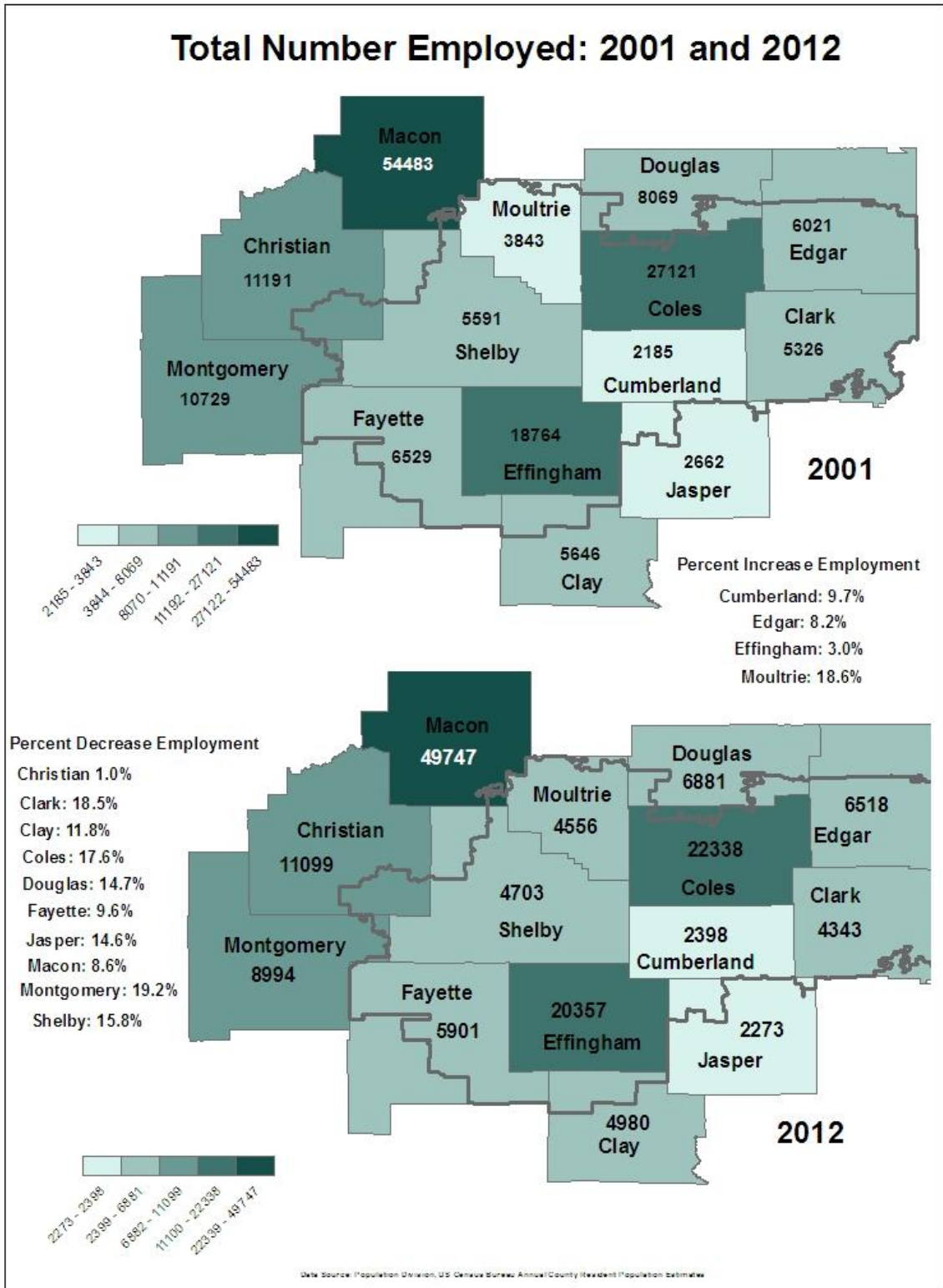
Data Source: Population Division, U.S. Census Bureau, Annual County Resident Population Estimates

## Unemployment Rates: 2003 - 2012

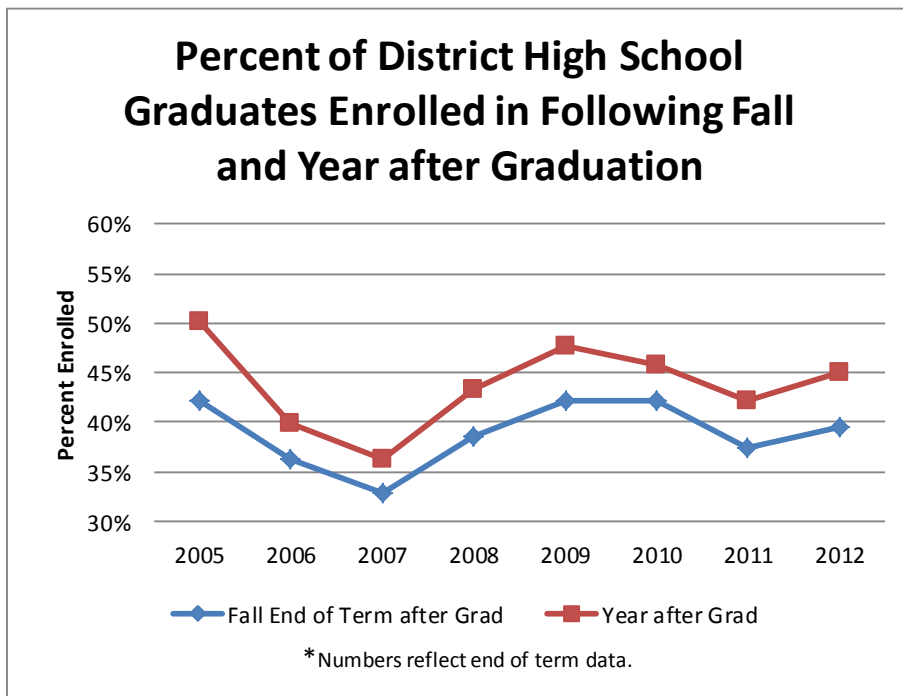
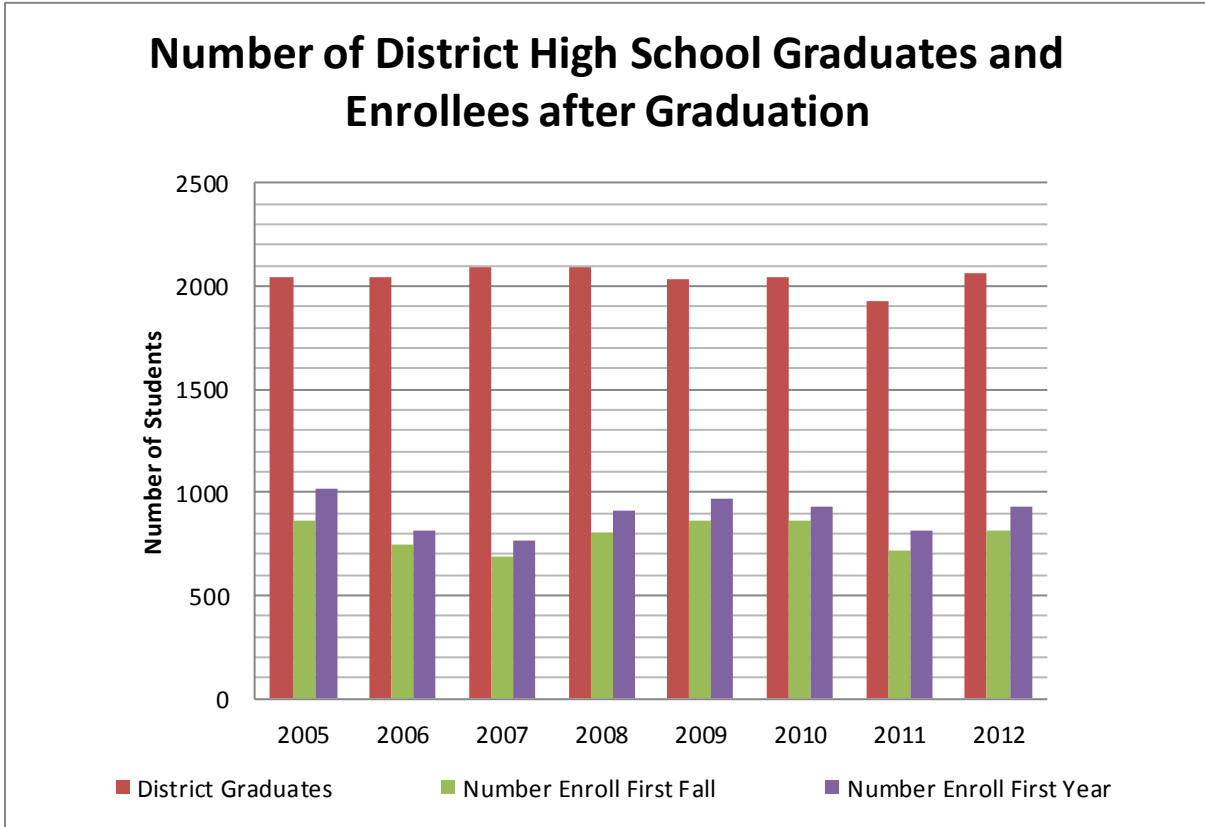


Data Source: U.S. Bureau of Labor Statistics

## Total Number Employed: 2001 and 2012

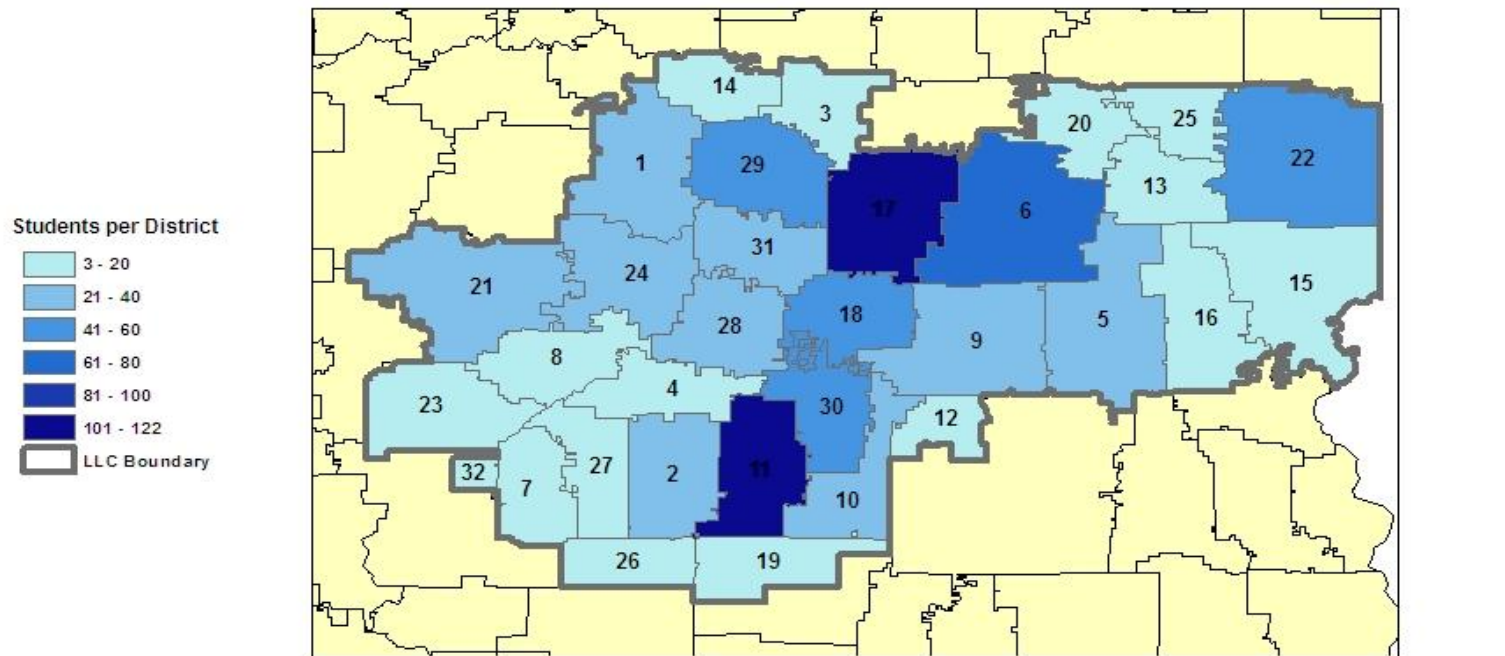


## Section B: Enrollment





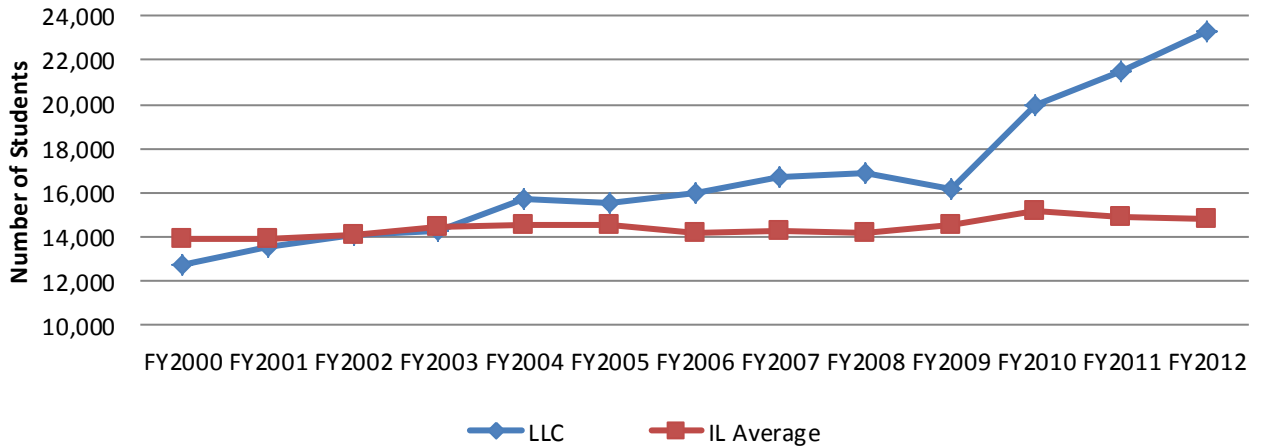
## Lake Land College Enrollment within One Year of High School Graduation FY 2013: Shown by School District of Origin



- |                                    |  |                                   |
|------------------------------------|--|-----------------------------------|
| 1. Okay Valley High School (21)    | 12. Newton Community High School (18)    | 23. Ramsey High School (12)       |
| 2. Altamont High School (36)       | 13. Kansas High School (6)               | 24. Shelbyville High School (40)  |
| 3. Arthur High School (11)         | 14. Lovington High School (6)            | 25. Shiloh High School (5)        |
| 4. Beecher City High School (20)   | 15. Marshall Community High School (17)  | 26. South Central High School (5) |
| 5. Casey Westfield Jr-Sr HS (38)   | 16. Martinsville Jr-Sr High School (10)  | 27. St. Elmo High School (11)     |
| 6. Charleston High School (71)     | 17. Mattoon Senior High School (122)     | 28. Stewardson-Strasburg HS (25)  |
| 7. Brownstown High School (9)      | 18. Neoga High School (43)               | 29. Sullivan High School (50)     |
| 8. Cowden-Herrick High School (12) | 19. North Clay Community High School (6) | 30. Teutopolis High School (53)   |
| 9. Cumberland High School (27)     | 20. Oakland High School (11)             | 31. Windsor High School (27)      |
| 10. Dieterich High School (24)     | 21. Pana High School (28)                | 32. Vandalia High School (3)      |
| 11. Effingham High School (122)    | 22. Paris High School (42)               |                                   |

Note: Enrollment of St. Anthony High School graduates is included in Effingham High Schools enrollment.

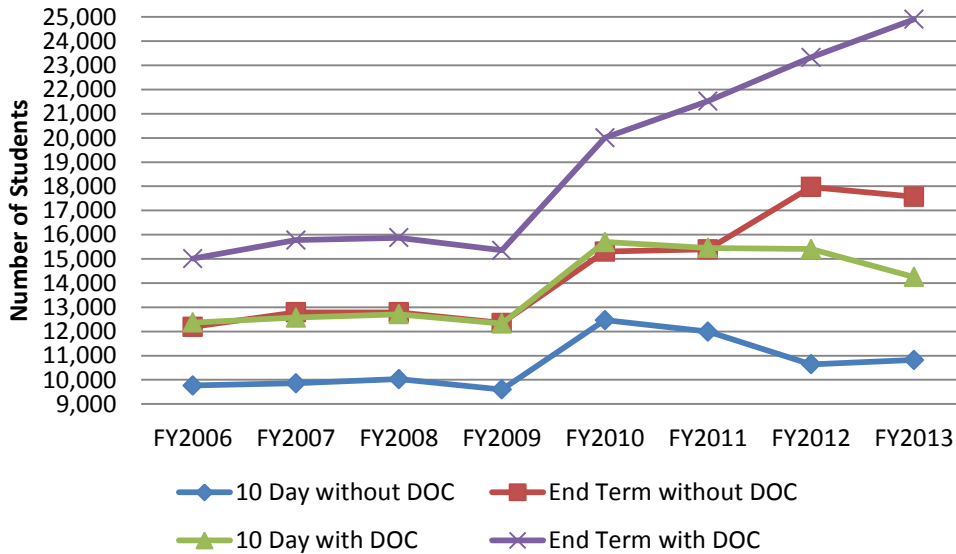
## Annual Headcount Compared to Annual Average Headcount of All Illinois Community Colleges



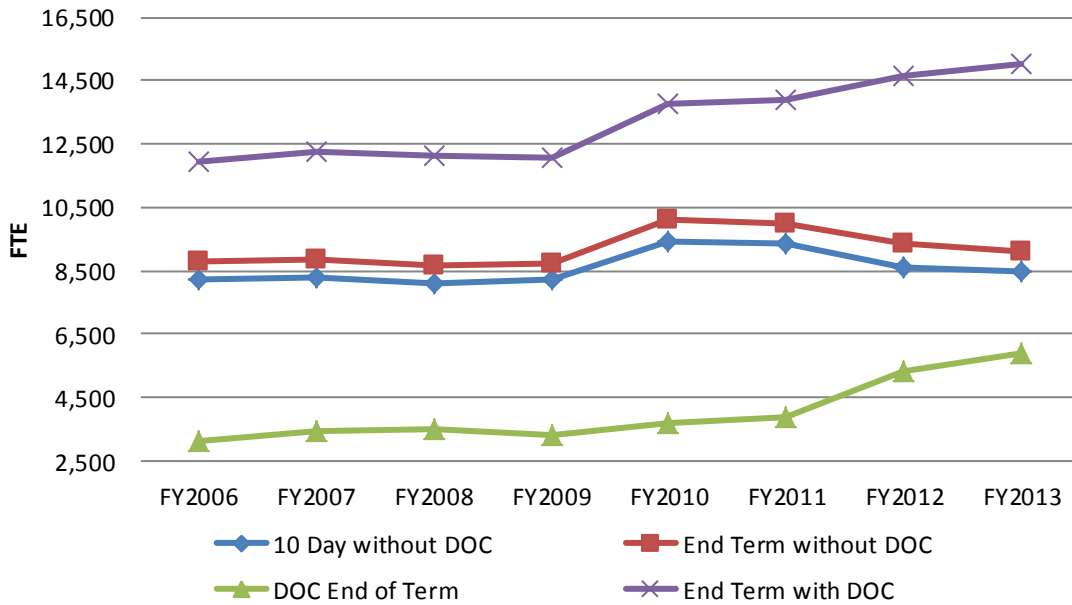
\*Data includes DOC students and is based on 10th day data.

\*\*Average Heads for All IL colleges is total number enrolled divided by 48.

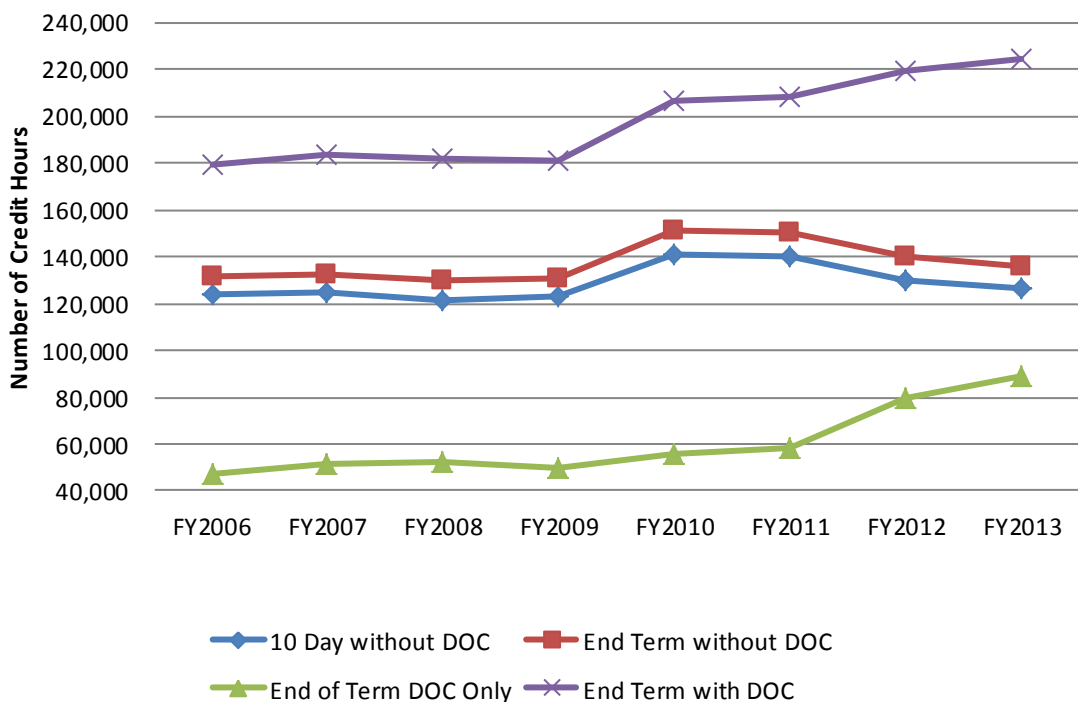
## Annual Headcount



## Annual Student FTE: 10th Day and End of Term Comparison

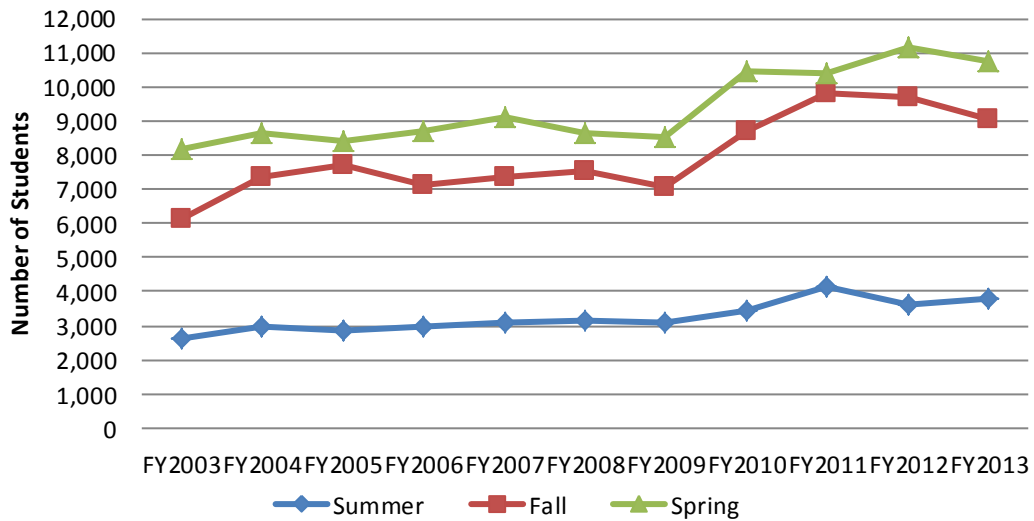


## Total Annual Credit Hours



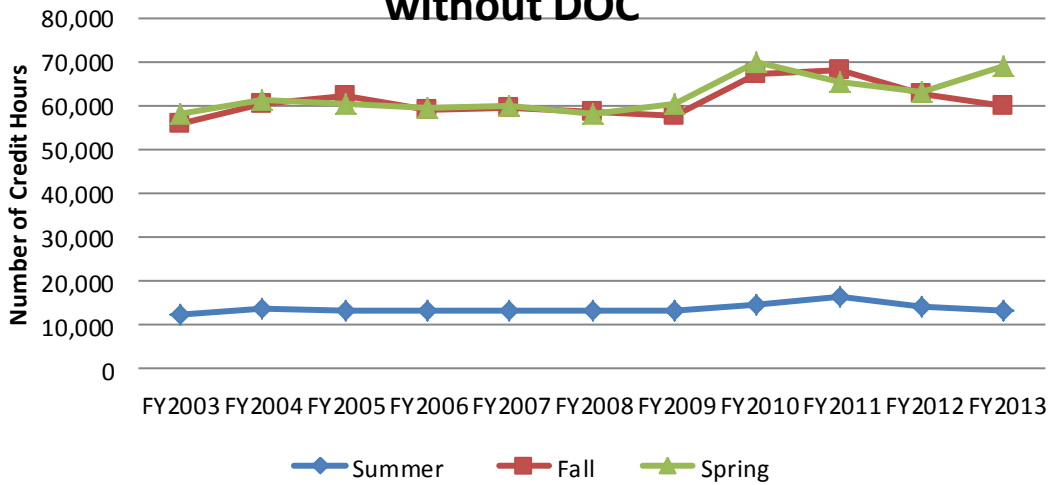


### Annual End of Term Headcount without DOC



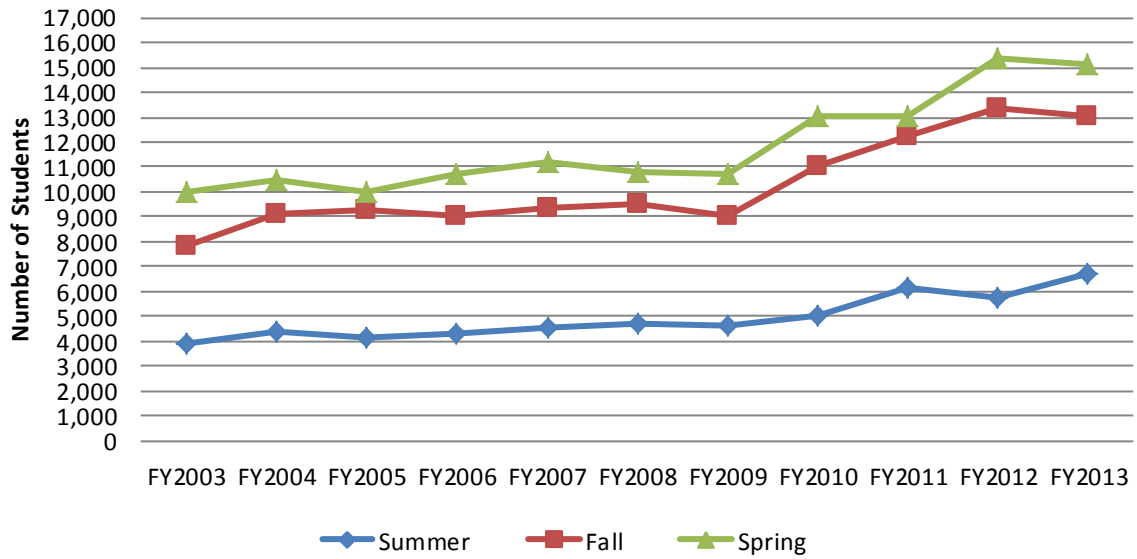
\*Data excludes DOC and represents duplicated students.

### Annual End of Term Total Credit Hours without DOC



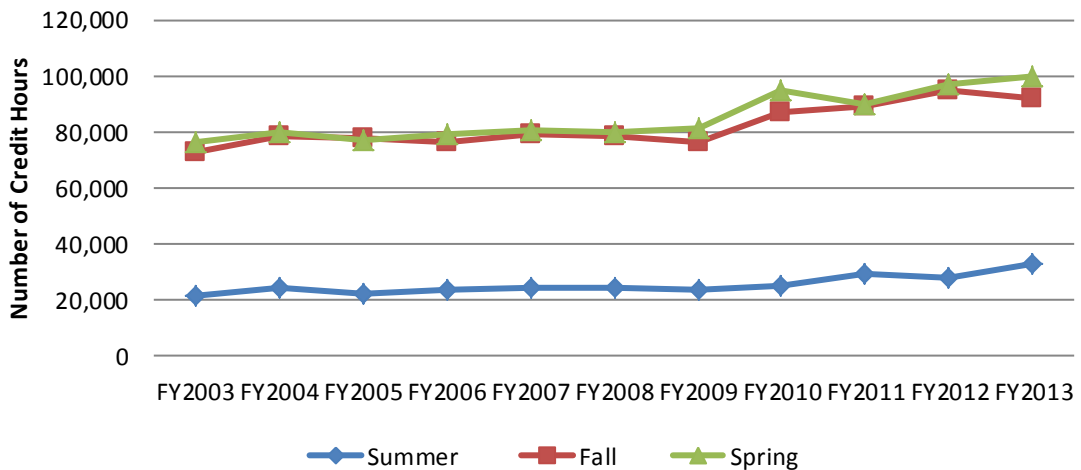
\*Data excludes DOC.

## Annual End of Term Headcount with DOC



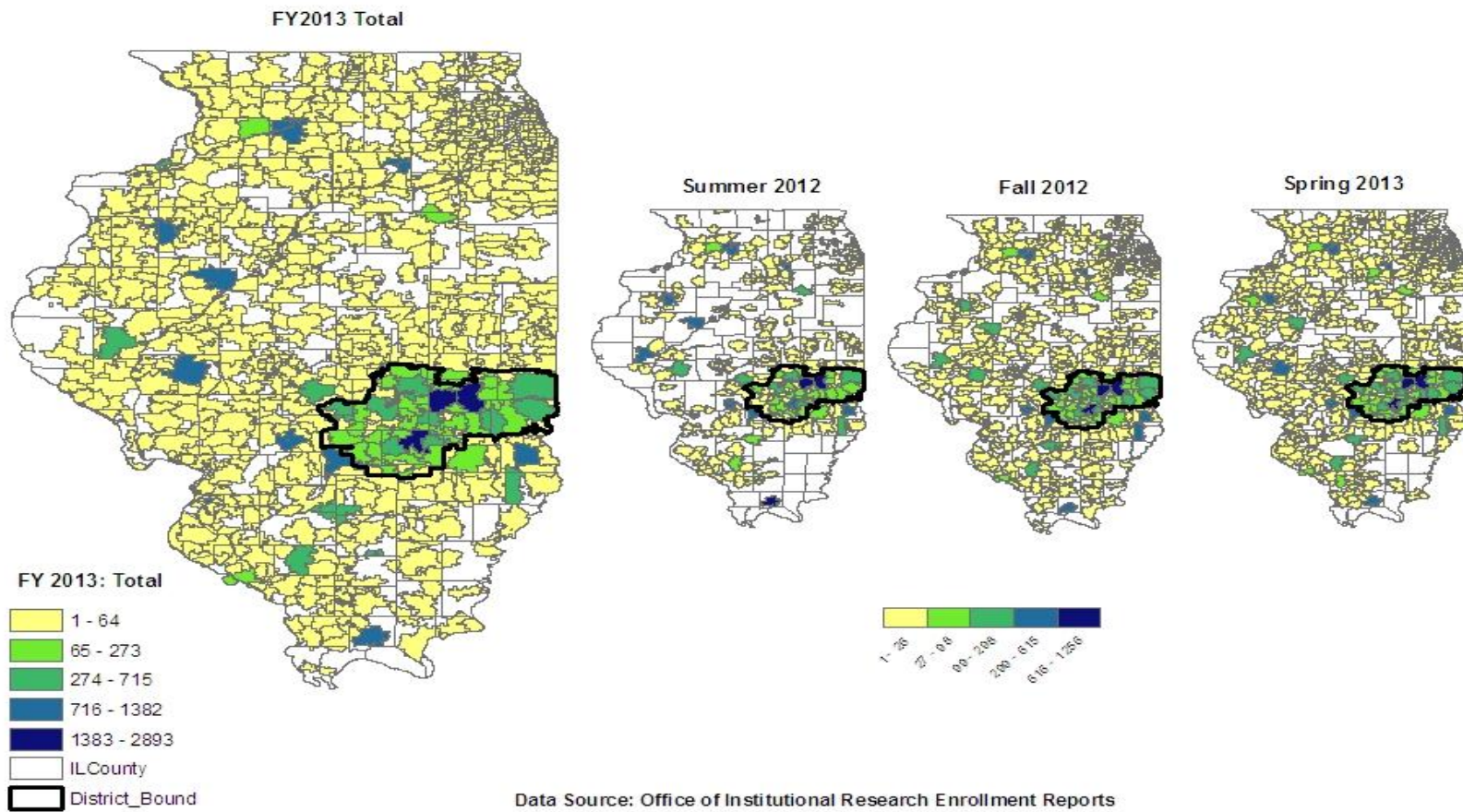
\*Data includes DOC students and represents duplicated students.

## Annual End of Term Total Credit Hours with DOC

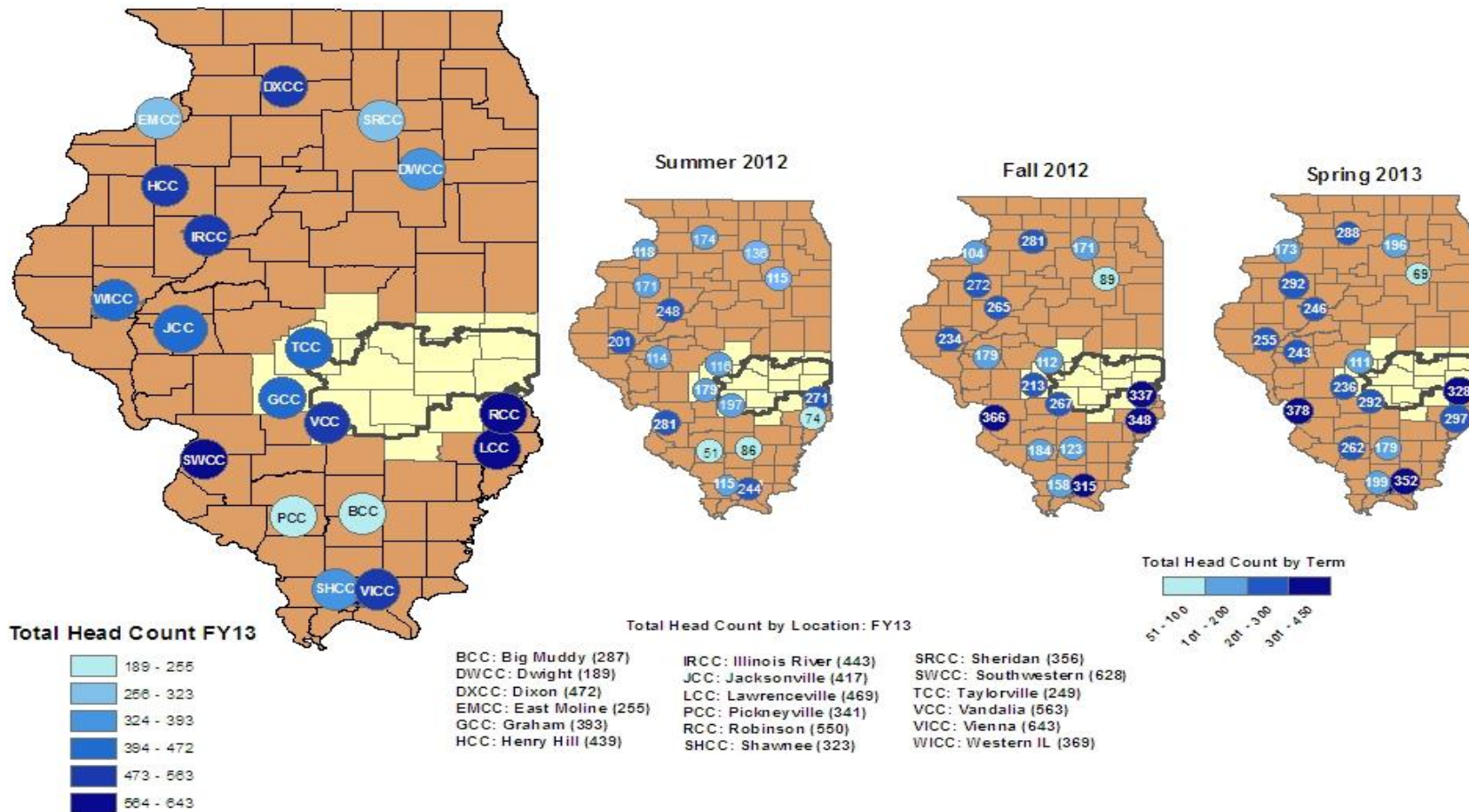


\*Data includes DOC students.

*Fiscal Year 2013 Enrollment: Head Count of All Illinois Students by Semester and Zip Code*

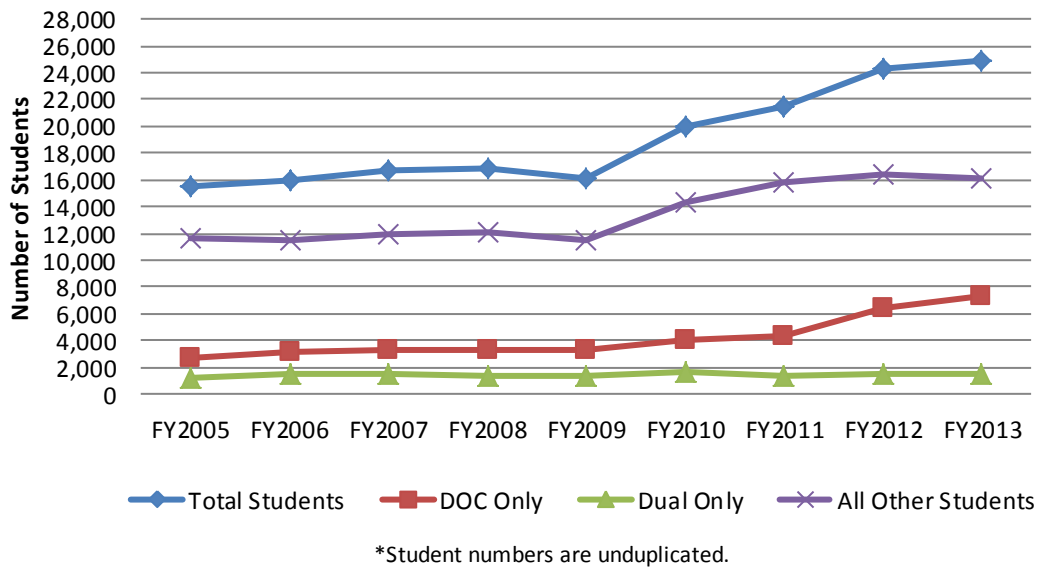


## Fiscal Year 2013 Enrollment : Illinois Department of Corrections Facility Head Count

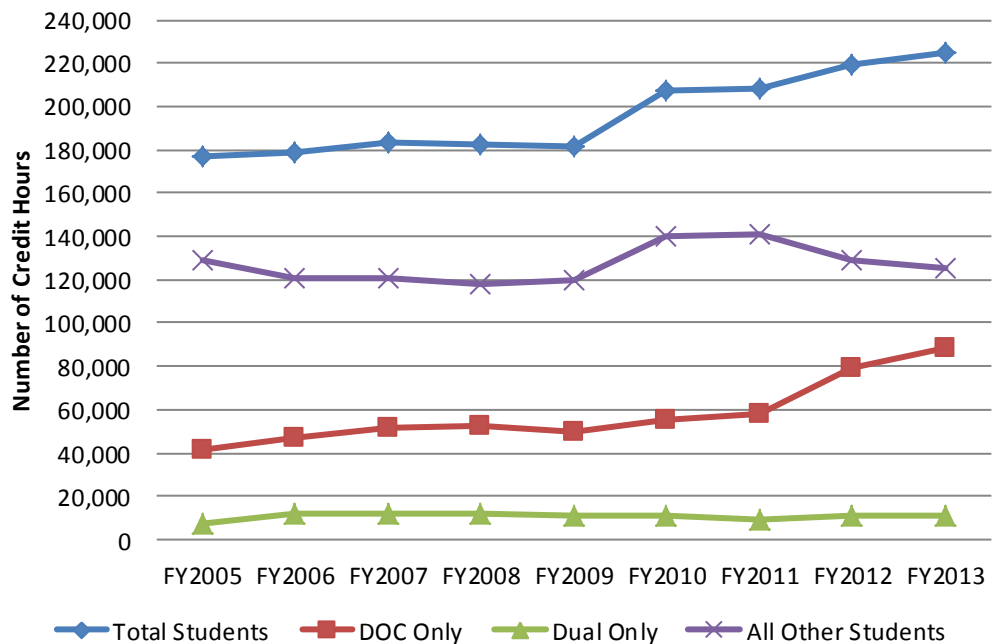


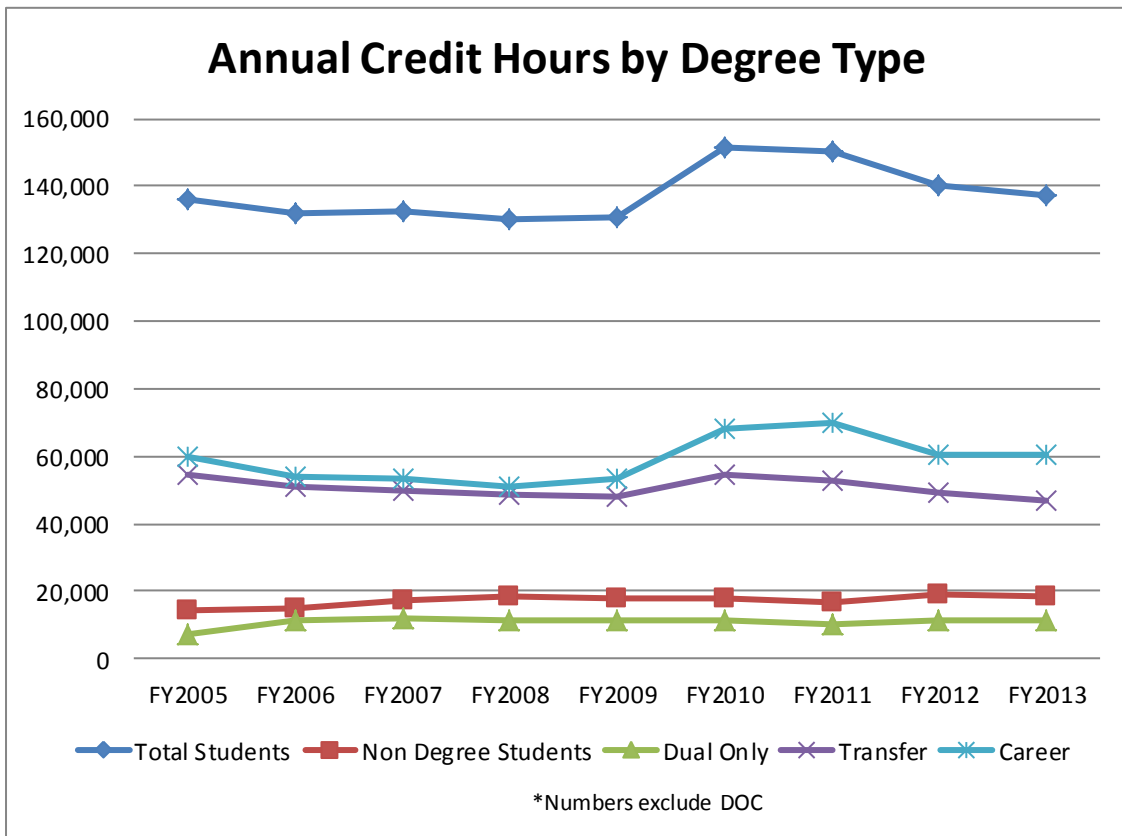
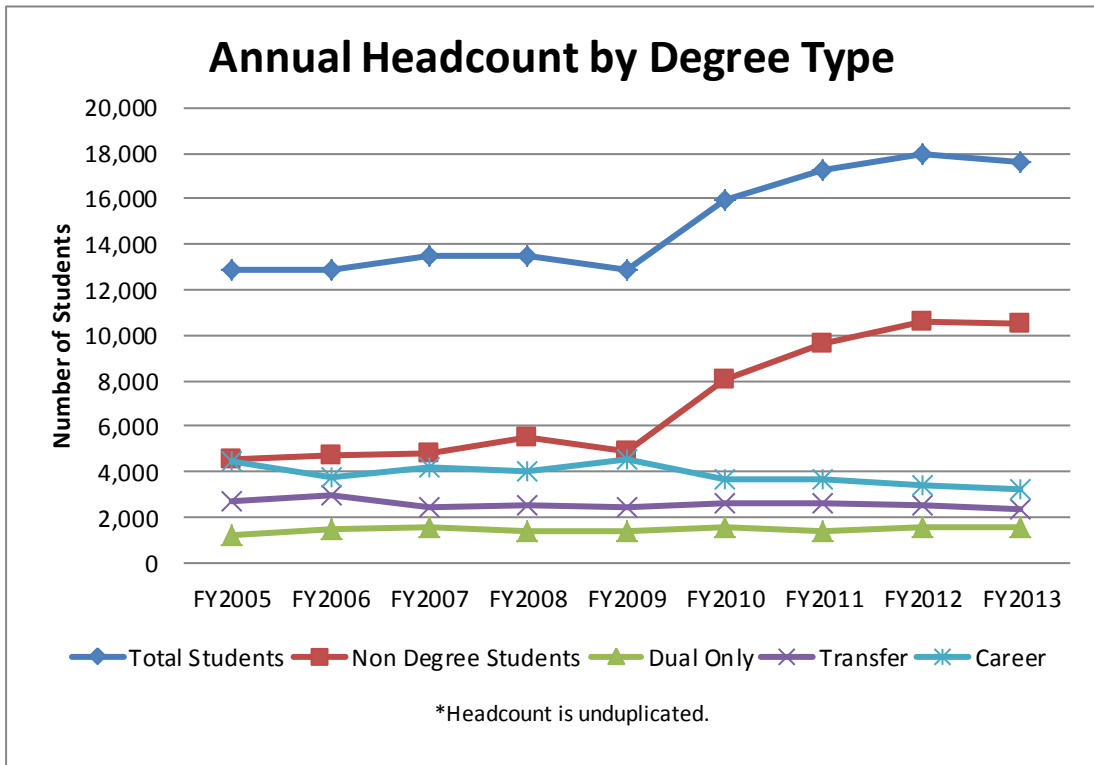
Data Source: Office of Institutional Research

## Annual Headcount by Student Category

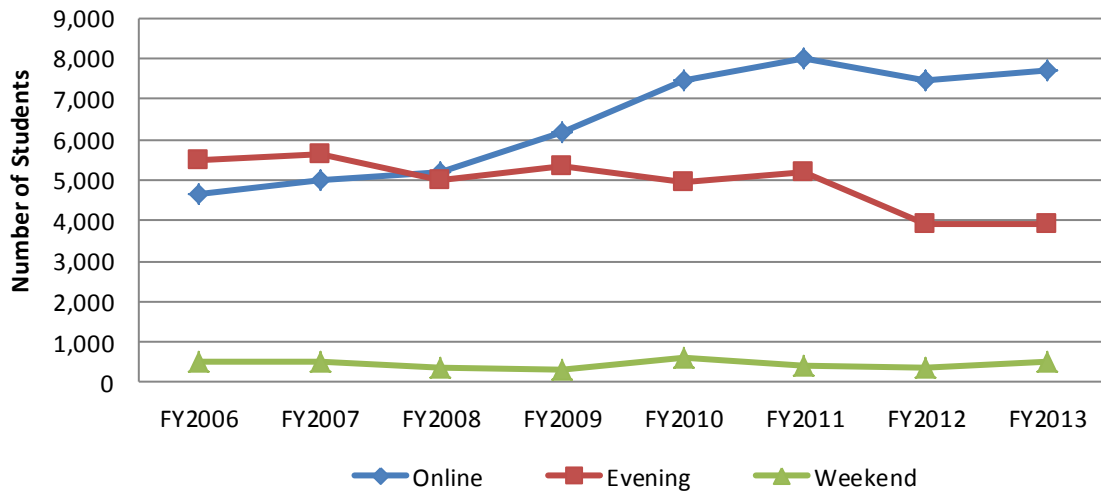


## Annual Credit Hours by Student Category



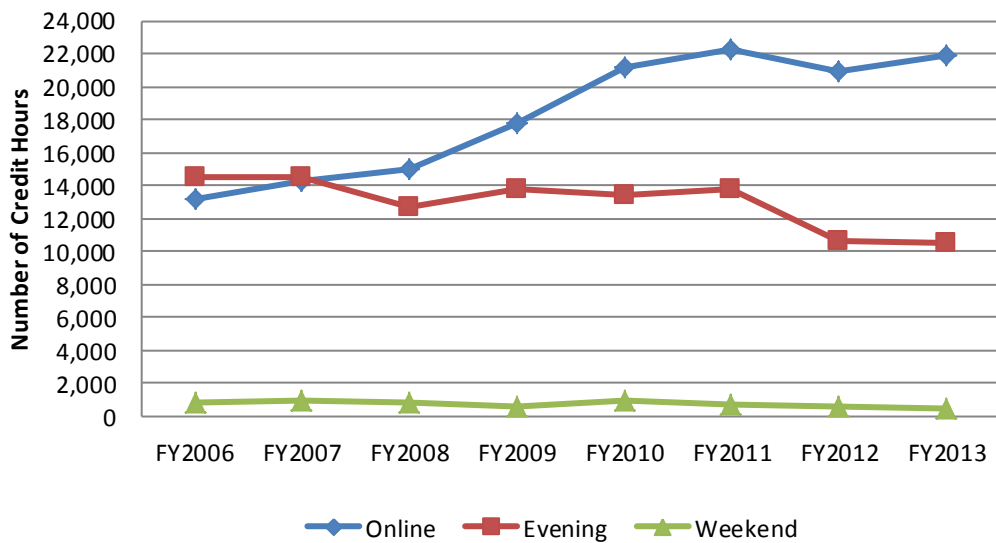


## Annual Duplicated Headcount by Type of Course

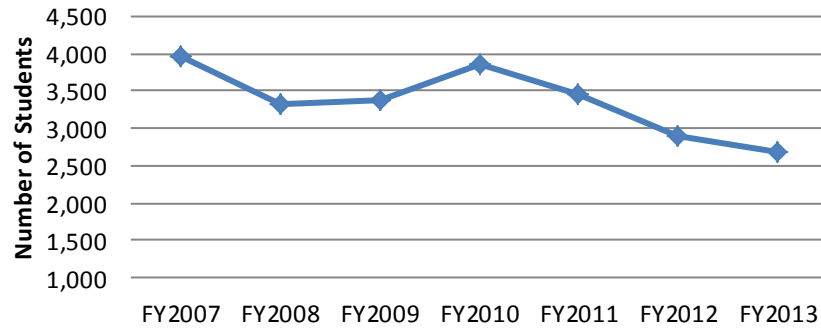


\*The number of students reported by category are duplicated. For example, someone taking online and evening courses would be counted in both categories.

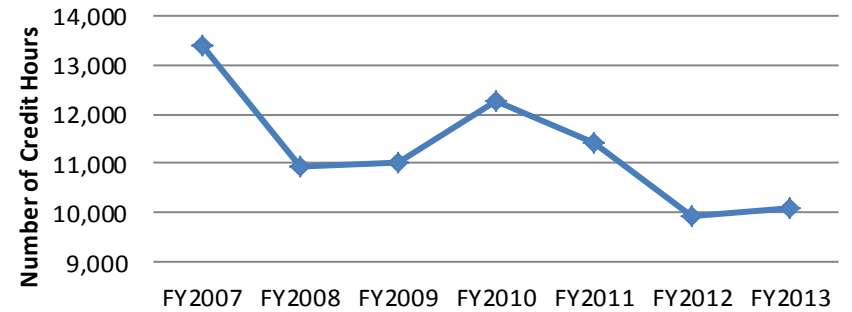
## Annual Total Credit Hours by Type of Course



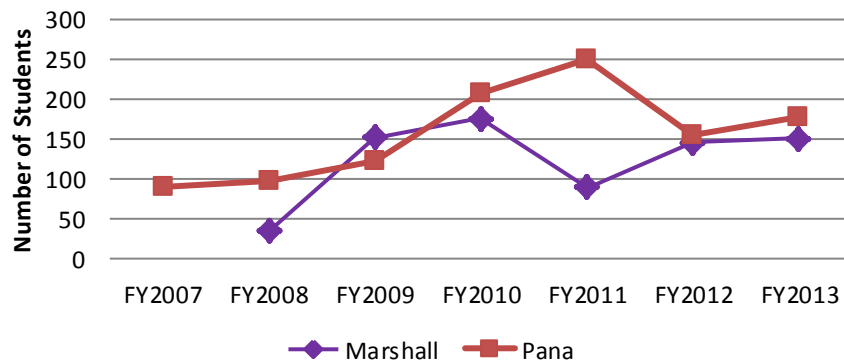
### Annual Duplicated Headcount for the Kluthe Center



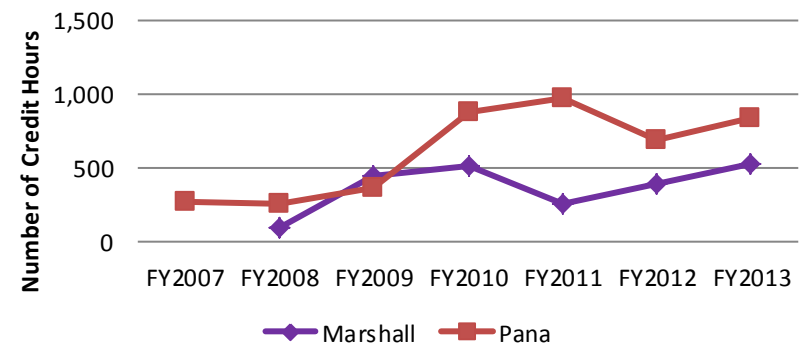
### Annual Credit Hours for the Kluthe Center



### Annual Duplicated Headcount for Extension Centers

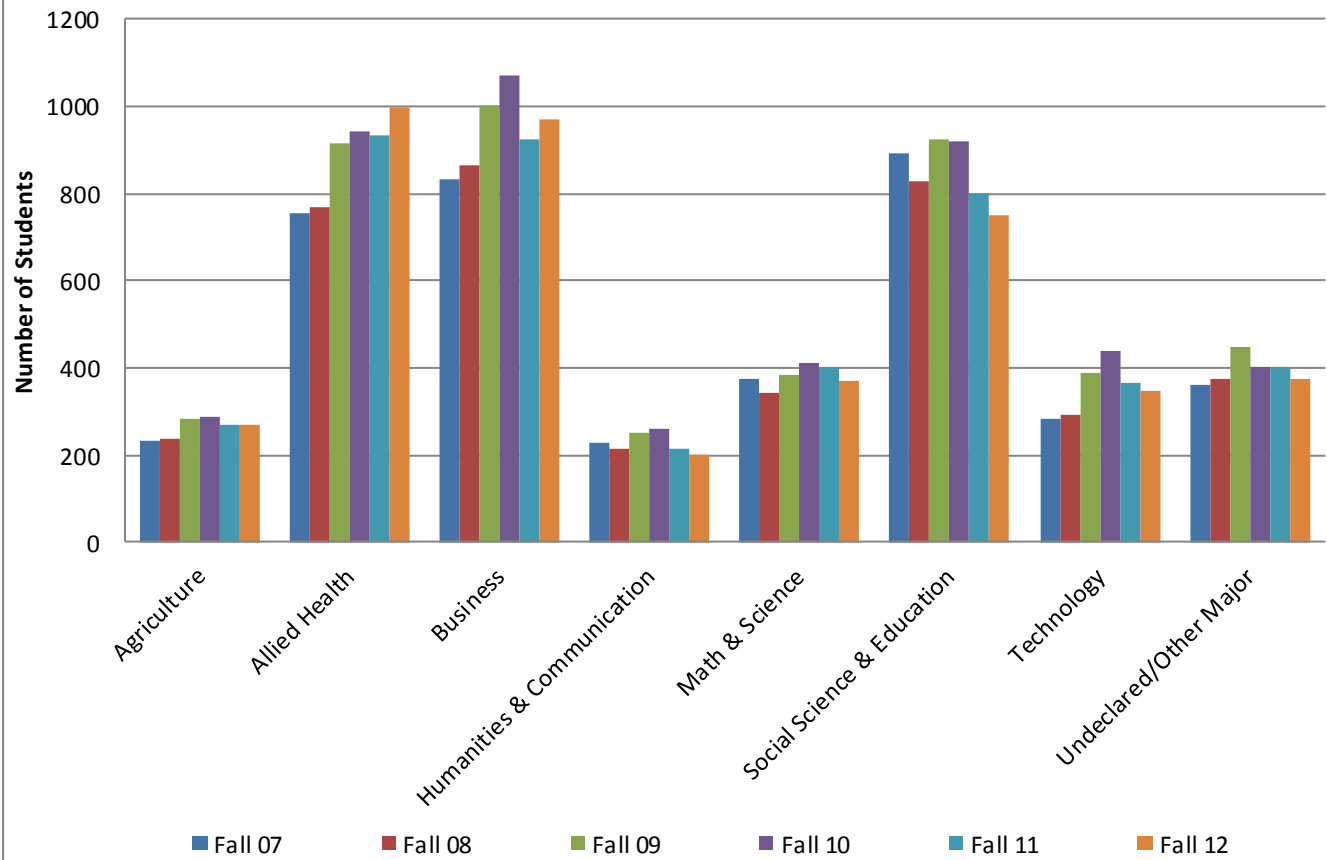


### Annual Credit Hours for Extension Centers

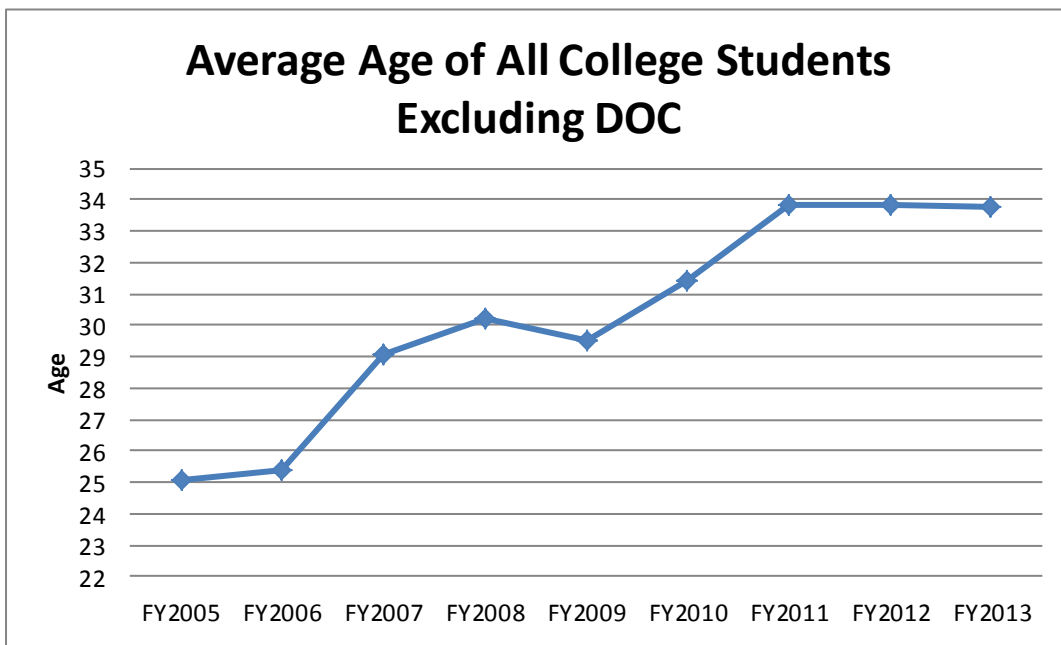
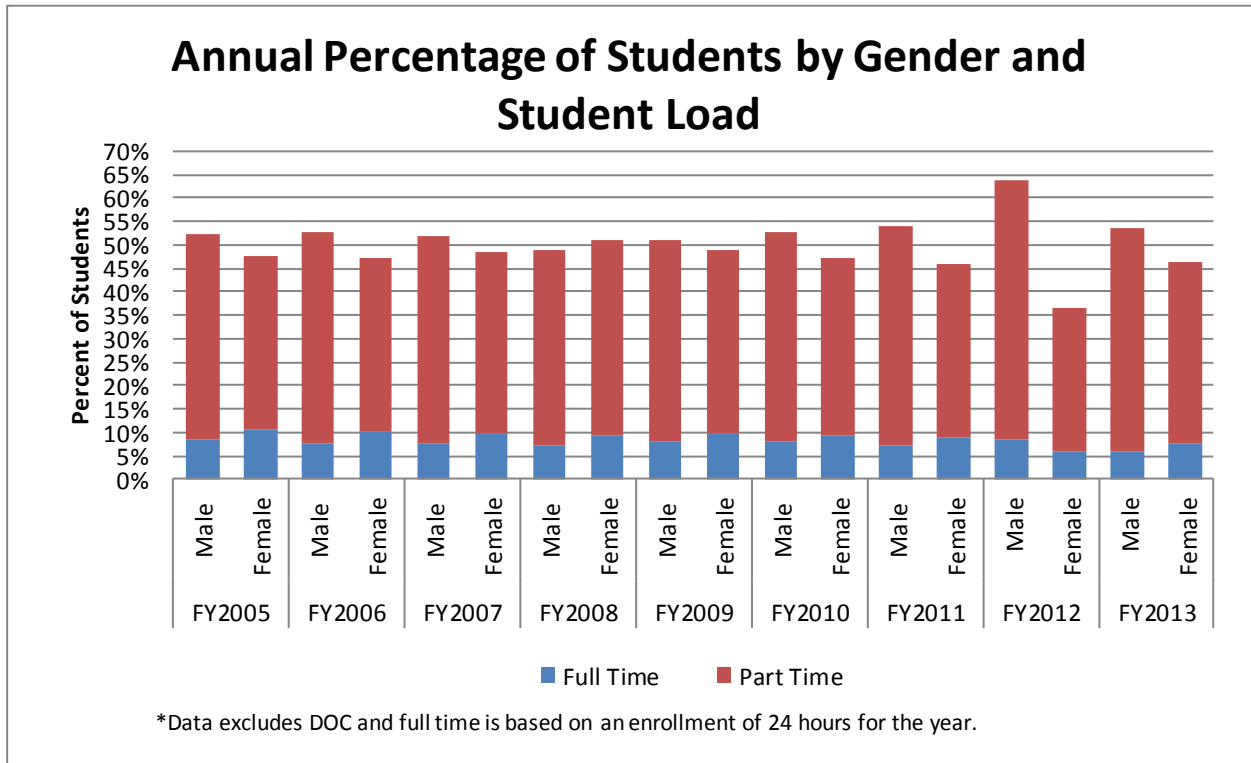




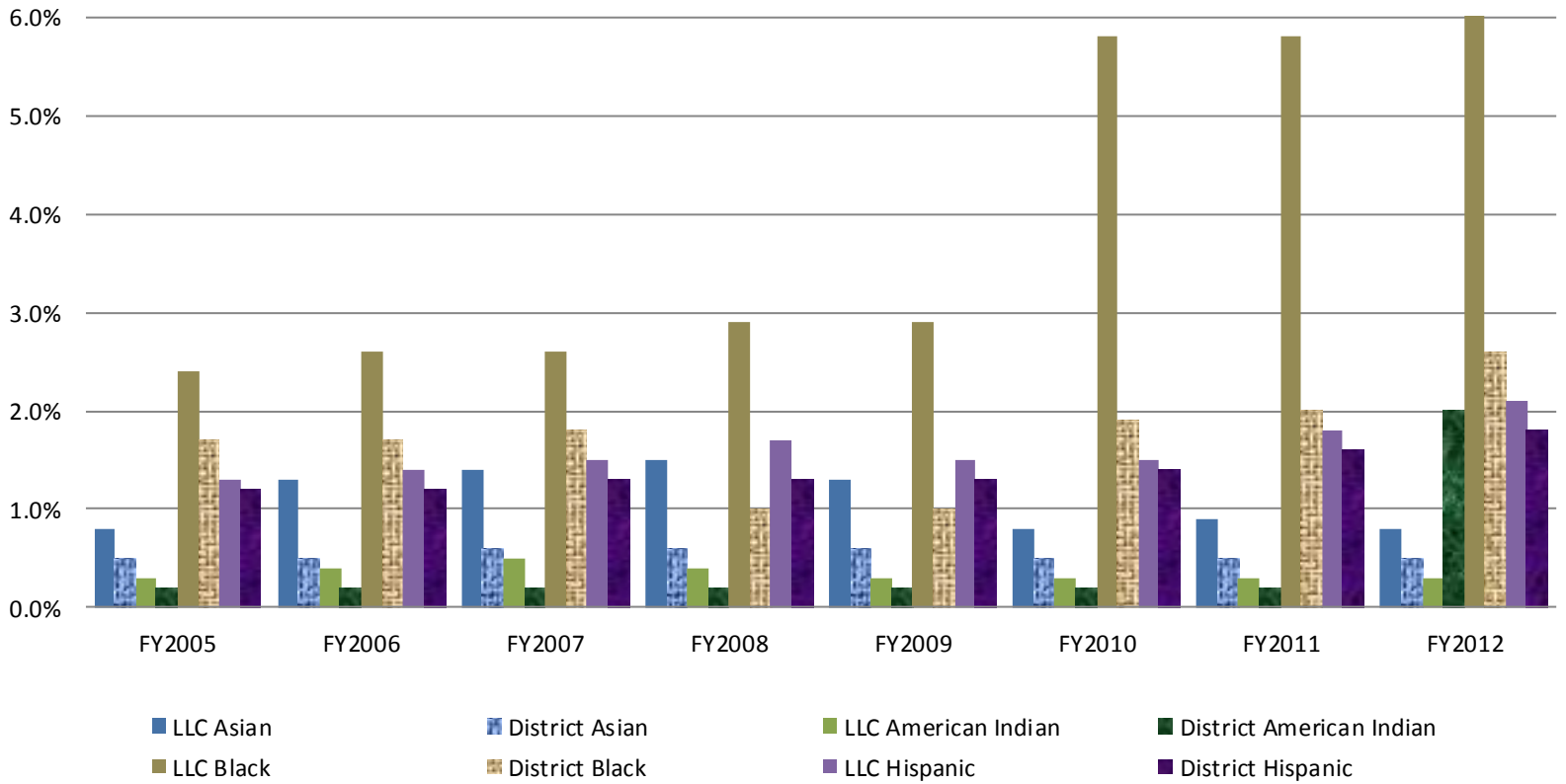
## Fall Enrollment by Student Program of Study (Major)



## Section C: Student Demographics and Information

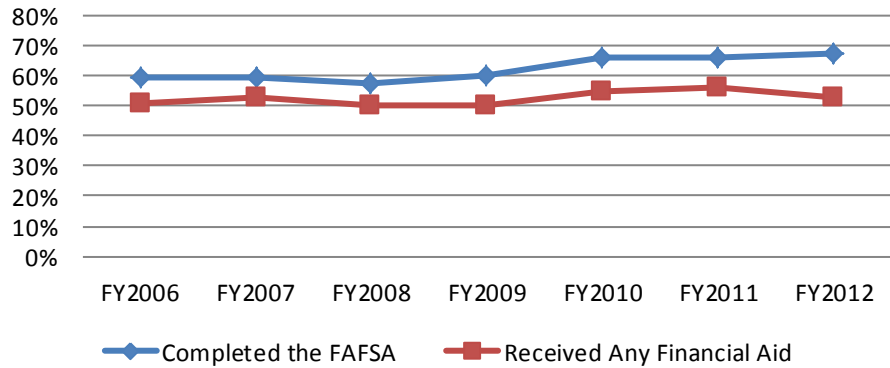


## Percent of Minority Students Compared to Percent of Minority Residents in the District



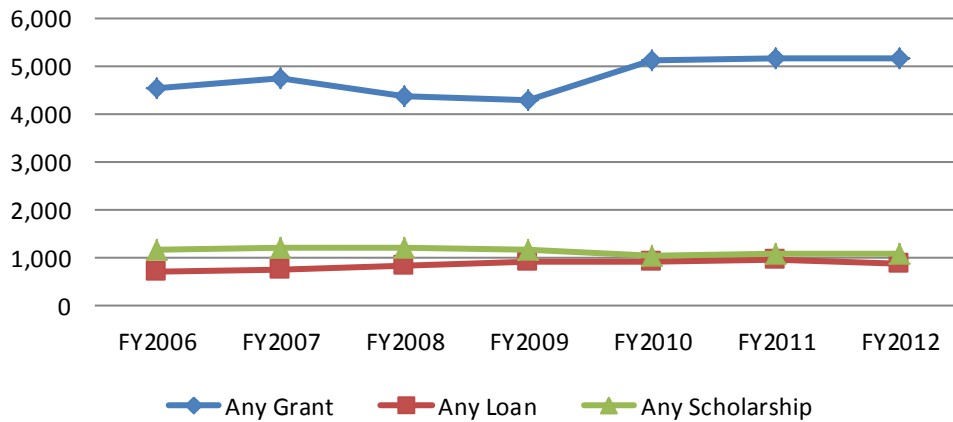
\*Data excludes DOC.

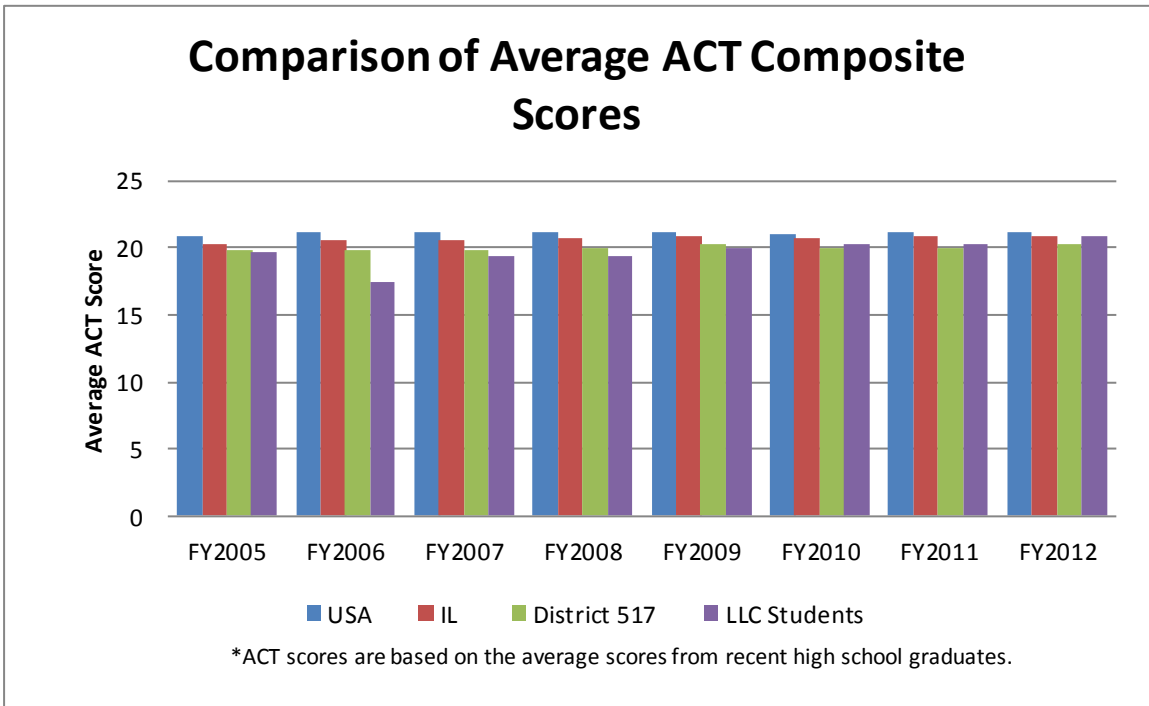
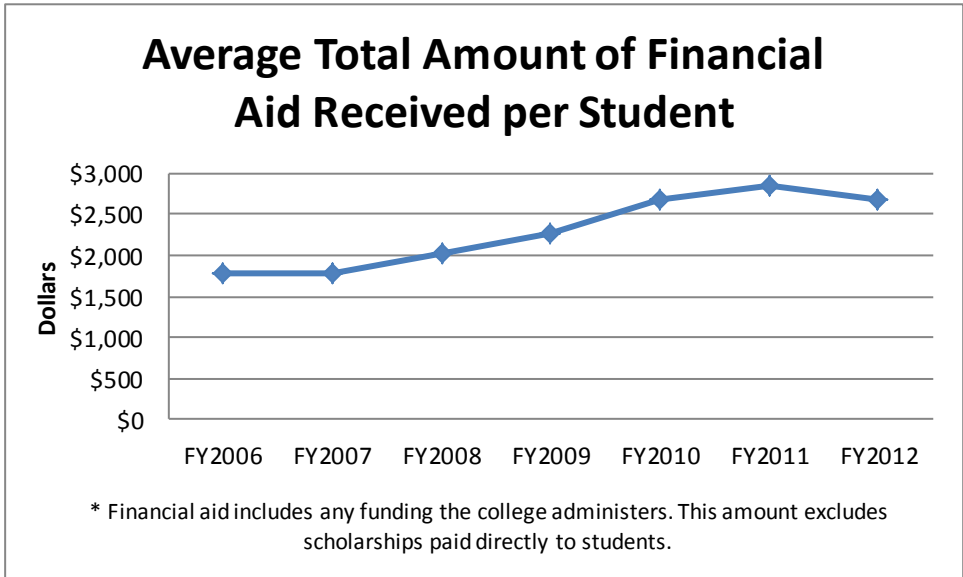
### Percent of Students Enrolled in Eligible Programs and Receiving Any Type of Financial Aid



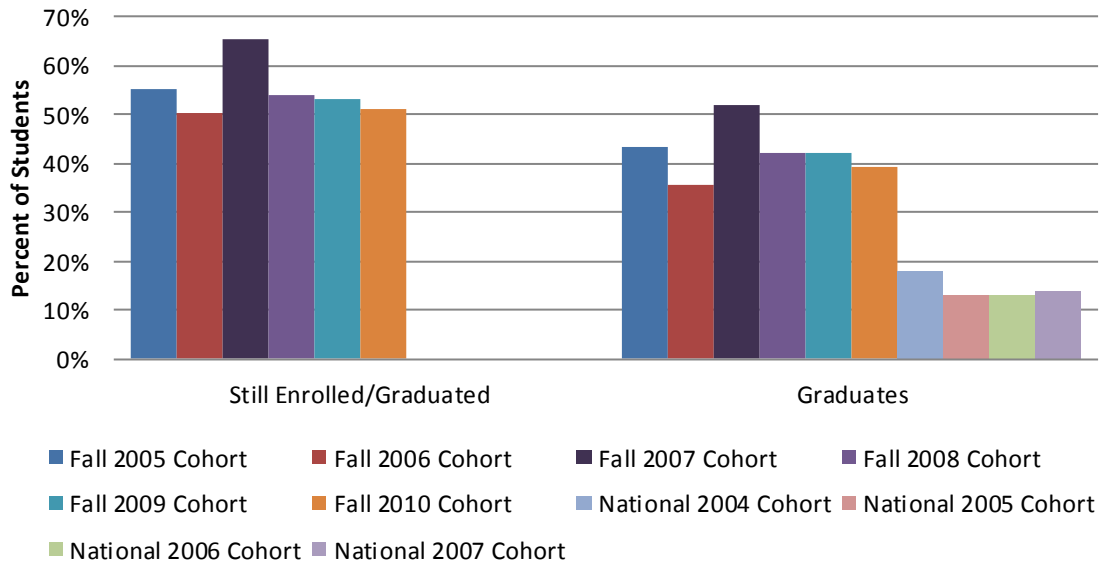
\* Any Financial aid includes any funding the college administrators. This amount excludes scholarships paid directly to students.

### Annual Number of Students Receiving Financial Aid by Type

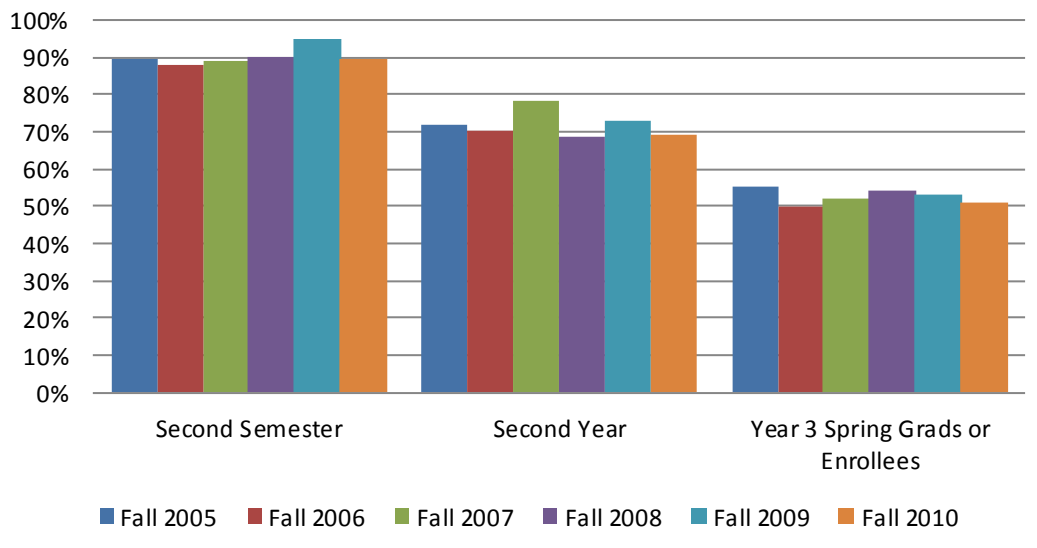




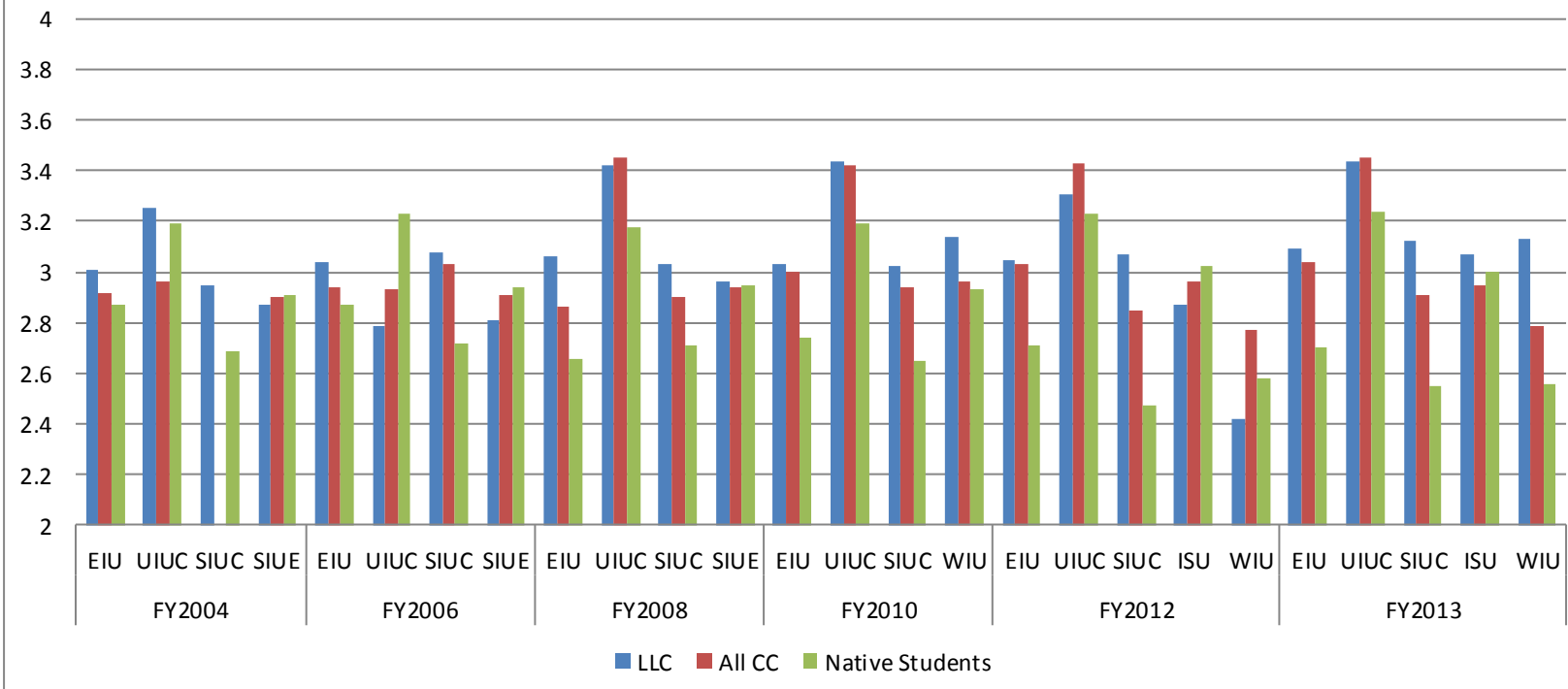
## Three Year Retention and Graduation Rates of First Time Full Time Degree Seeking Students



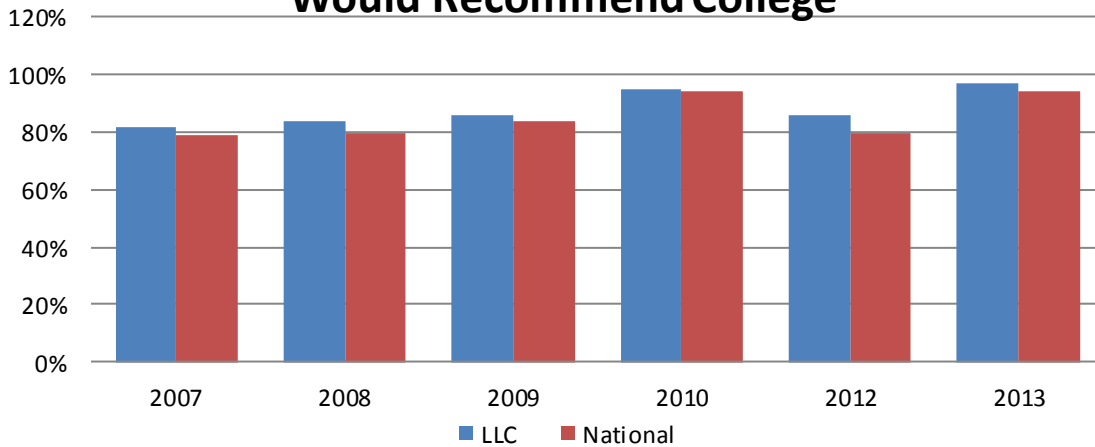
## Retention for First Time Full Time Degree Seeking Student Cohorts



## Average GPA of Lake Land College Transfer Students Compared to all Other Community College Transfer and Native Students

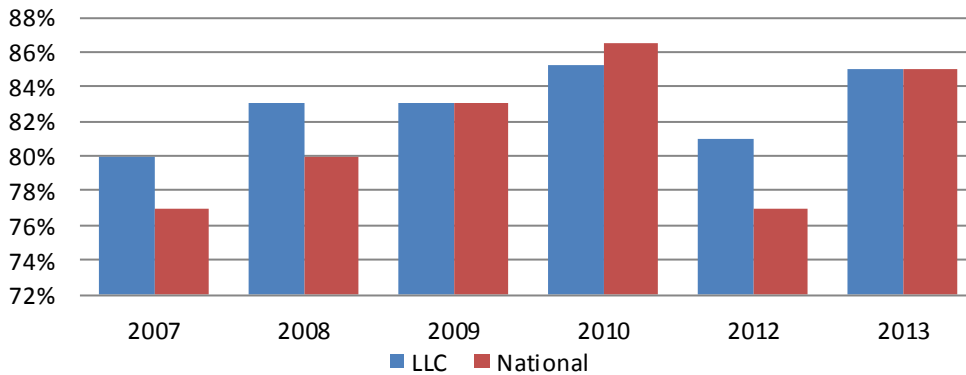


## LLC Compared to National Average: 2007-2009, 2012 Would Enroll Again; 2010, 2013 Would Recommend College



Data Source 2007-2009, 2012: Noel Levitz Satisfaction Survey  
Data Course 2010, 2013: Community College Survey of Student Engagement

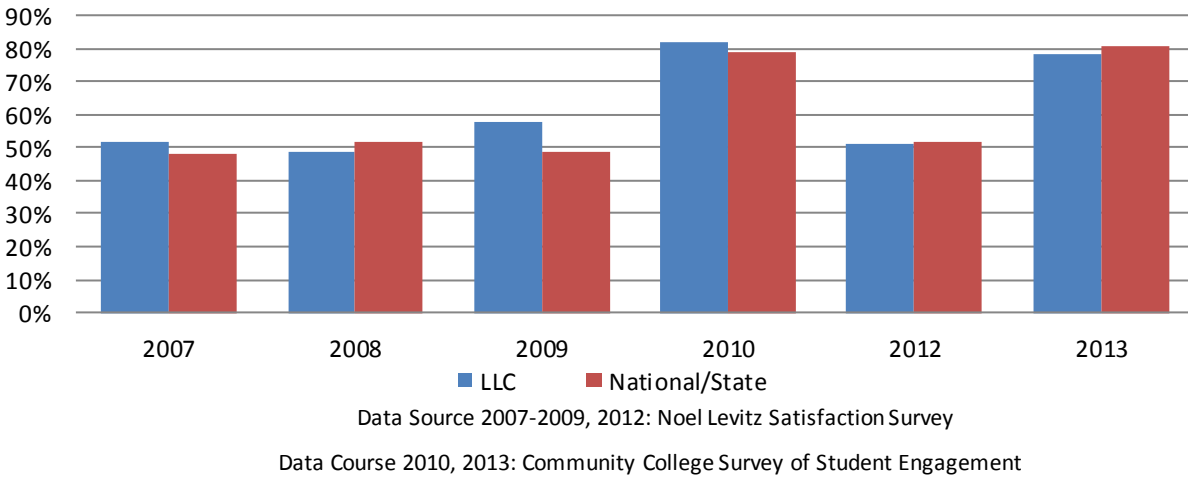
## LLC Compared to National Average: Satisfied with College Experience



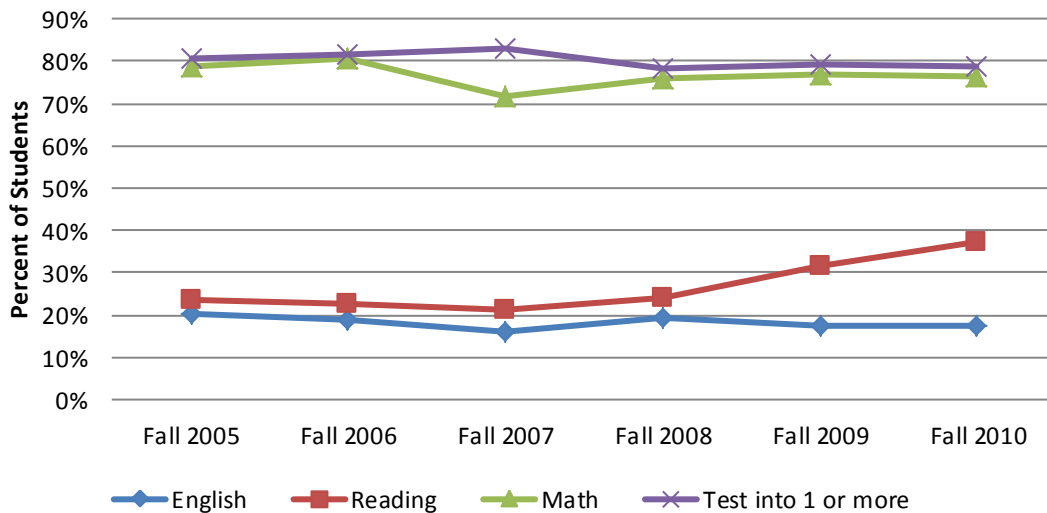
Data Source 2007-2009, 2012: Noel Levitz Satisfaction Survey  
Data Course 2010, 2013: Community College Survey of Student



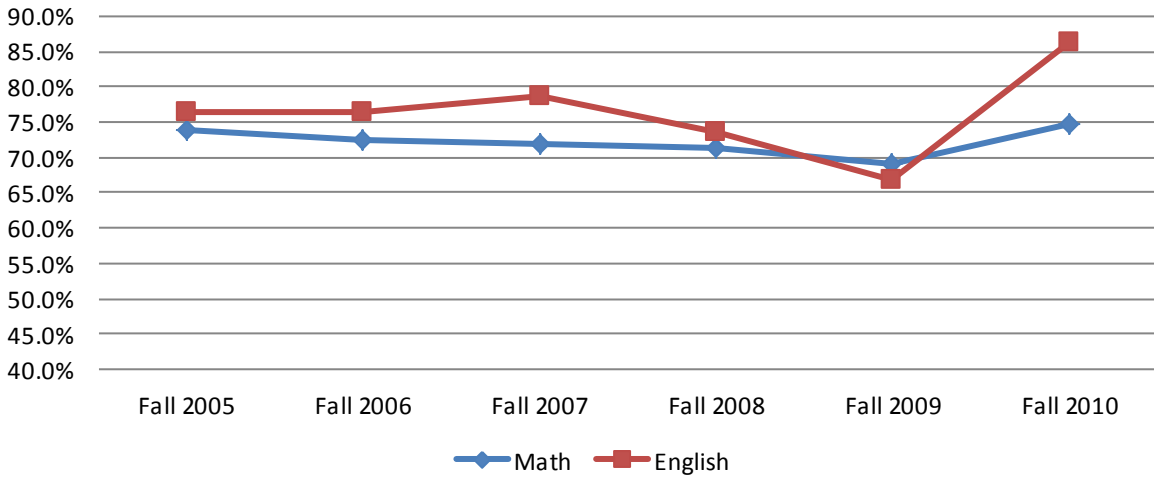
## LLC Compared to National Average: 2007-2009, 2012 College Experience Better than Expected; 2010, 2013 Academic Quality of College



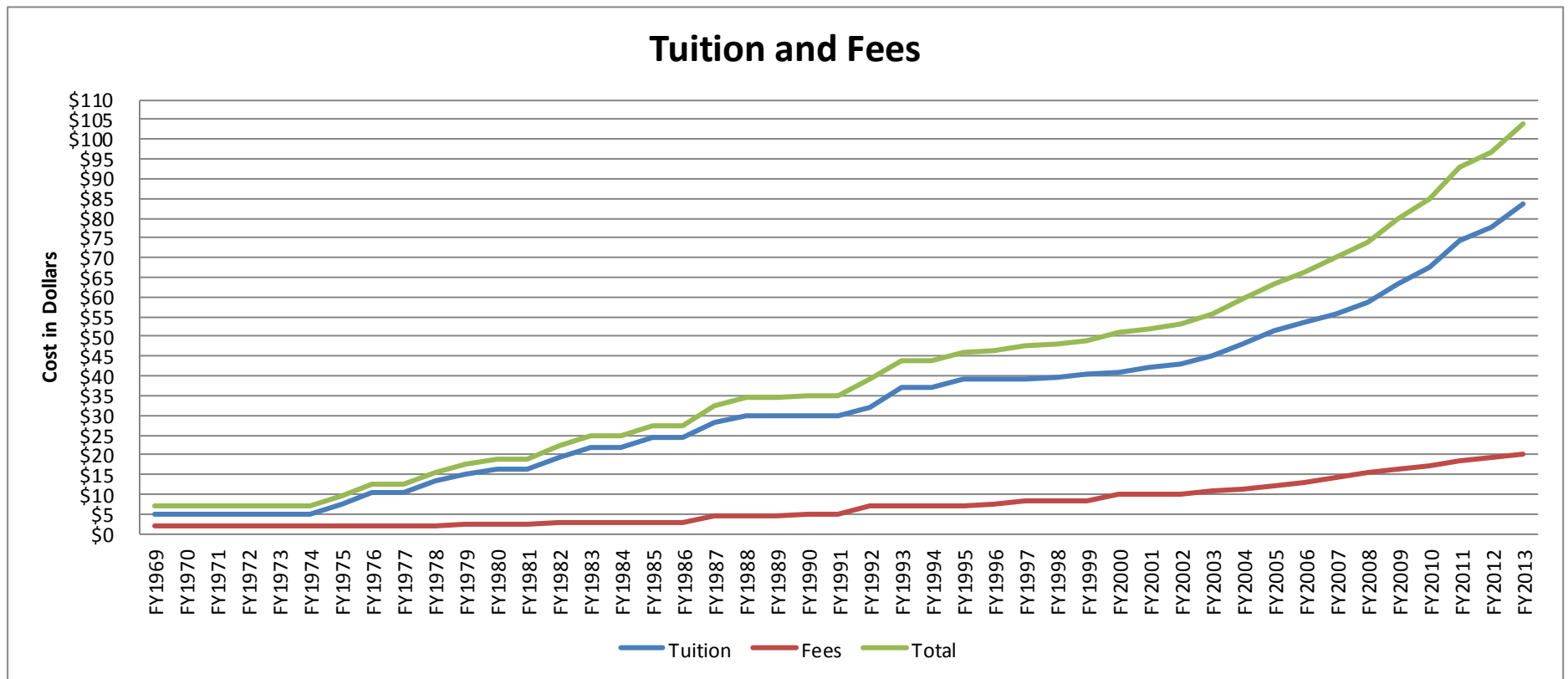
## Percentage of First Time Degree Seeking Students Testing into Developmental Courses



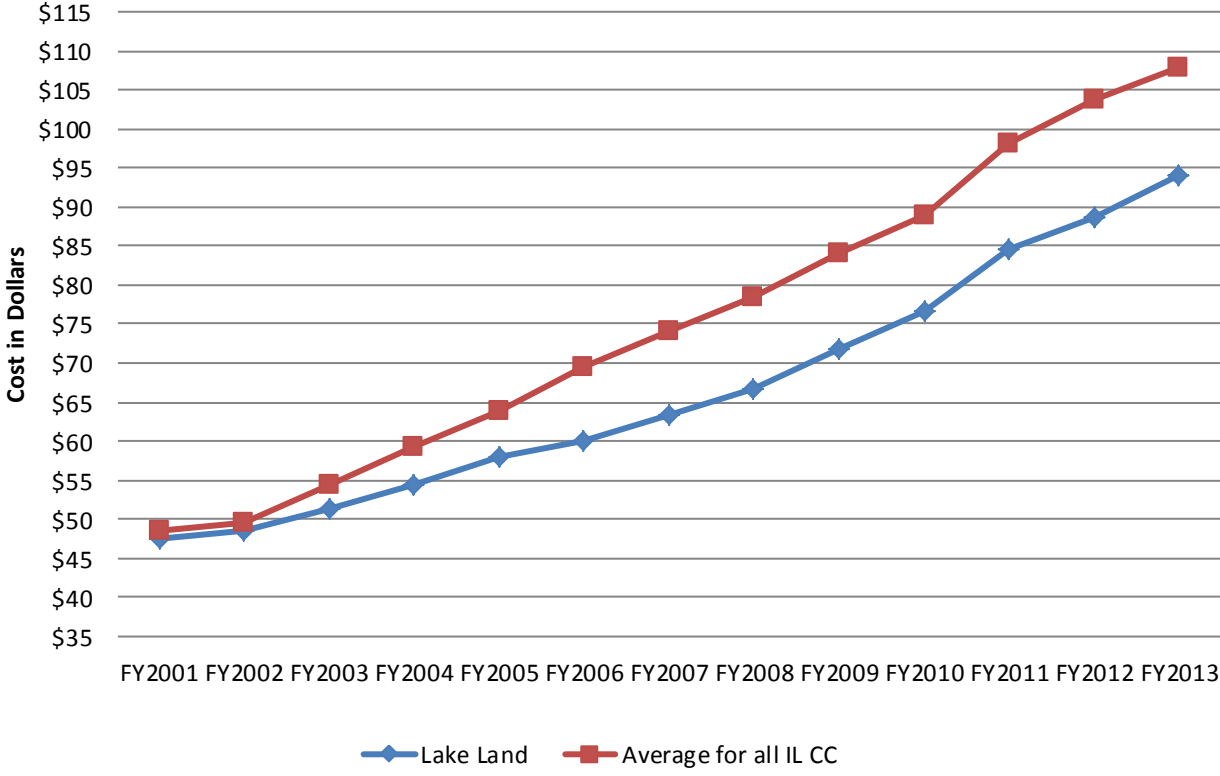
## Students Successfully Complete First College Level Course after Final Developmental Course



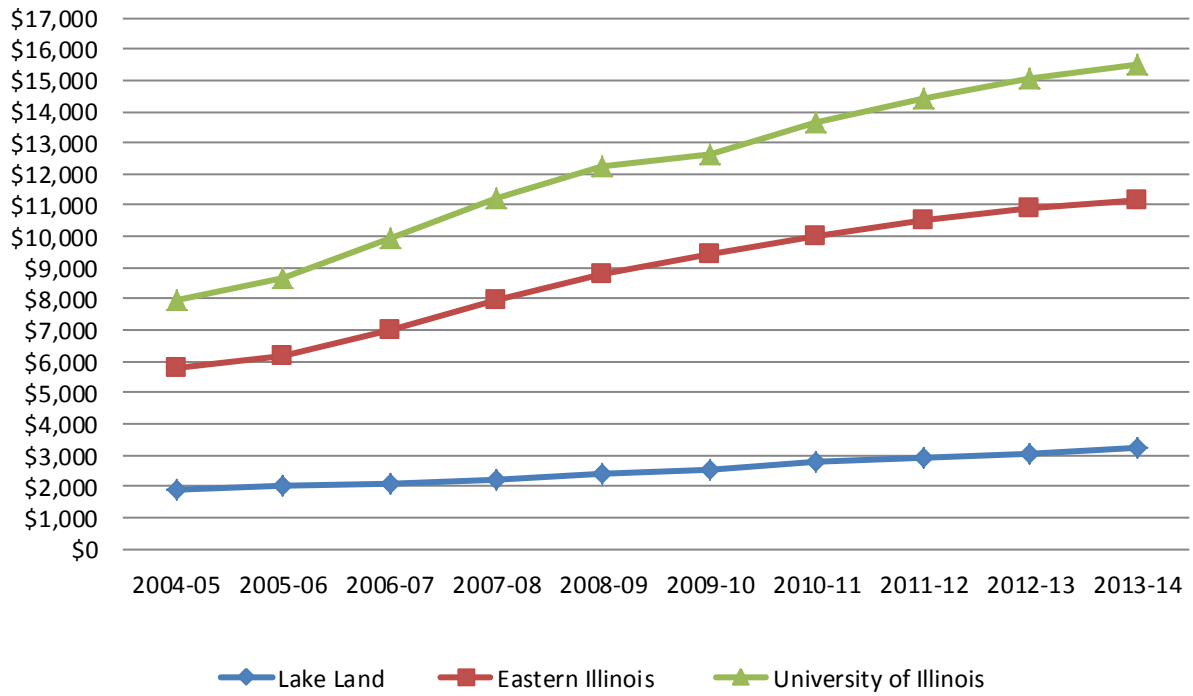
## Section D: Tuition, Fees, and Other Financial Data



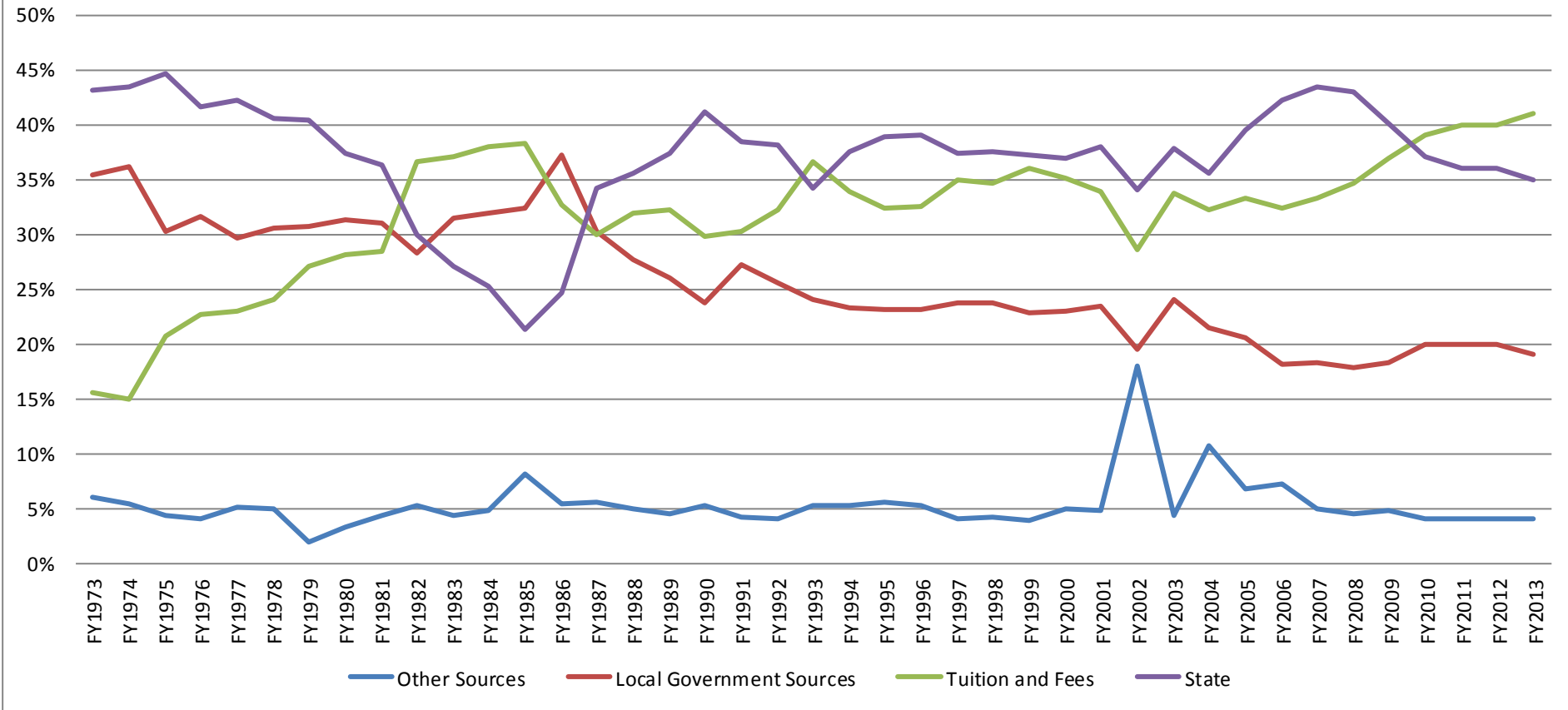
# Comparison of Tuition with all Illinois Community Colleges



## Annual Tuition and Fees for Full Time Students by College



## Percentage of General Fund by Source



### Dollar Amount of General Fund by Source

